

Lighthouse Quilters Guild

Betty's Bits 'n Pieces

Happy New Year to all of you! I hope you enjoyed a wonderful Christmas with your families. This is always such a special season for my family.

Winter is here. Our January board meeting was cancelled because of the ice. Hopefully we will all be able to make it to the general meeting on January 31st! It is always such a long time between our Christmas party and the January meeting. It is fun to catch up with what each other has been doing when we meet again.

I hope you are taking advantage of our cold winter and working on your quilts for the quilt show in October. We all need to participate for a successful show. There will be a quilt show board meeting on Thursday, January 20th at 7:00 pm in the Luther Room at Church.

Betty Suiter



Quilters Land Cruise 2005

As of January 6, all of the classes offered by the Quilters Land Cruise on March 4, 5, & 6, 2005 have openings! We also have room left in all the categories of our second annual Virtual Quilt Show. Early registration deadline is January 15, 2005 BUT final registration doesn't close until February 4, 2005.

If you need to see color photos of all the classes (except the Mystery Quilt Class!) along with the explanation of the Virtual Quilt Show, you can visit www.quilterslandcruise.com and go to the bottom of the Home Page for the links to Class Descriptions and Registration Form.

I will have brochures at the January meeting and you can sign up then. Remember, though, we need a long SASE for your supply lists. We do take cash for the stamp!!!

Again, call me if you have questions. Barbara Vallone, 262-639-8185 or QltingB@aol.com

January 2005

NQA Chapter WI 727

Things to bring to the January Meeting:

- J Your nametag
- J 2005 membership application and dues
- J Show & Tell

Next Board Meeting:

Monday, February 7, 2005, at 7:00PM at Lutheran Church of the Resurrection.

Inside this issue:

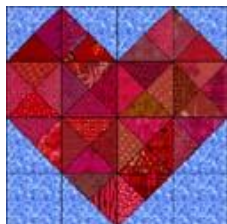
February Hospitality	2
Membership News	2
Event Update	3
All Saint Project	3
February's Speaker	3
Quilt Camps	4
2005 Program Plans	4
Regional Shows	5
Guild Mtg Minutes	6
Membership Form	7

Hospitality Committee: February 2005

February 2005 Hospitality Committee

Chairperson: Dianna Zimmerman

- Cecilia Johnson
- Karen Thomsen
- Linda Berger
- Marge Martin
- Jody Knudtson
- Sandy Veit
- Vicki Madsen
- Barb Caminiti



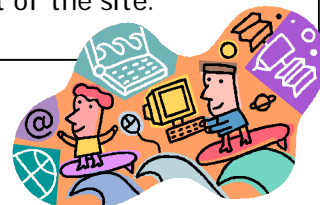
The theme is: Chocolate

LHQ has a website!
Visit it soon!

The site name is:

<http://lighthousequiltersguild.org/>.

Set it up with a bookmark, so you can visit it often. It has a lot of good information and will also have a copy of recent newsletters for your viewing enjoyment. Thanks to Cindy Byers for the development of the site.



Membership News

Joyce Guillien and I (Roxanne Mierow) are looking forward to a great year of quilting in 2005. We will be sharing the membership duties and look forward to seeing you all at the membership table. Please remember to sign up for door prizes!

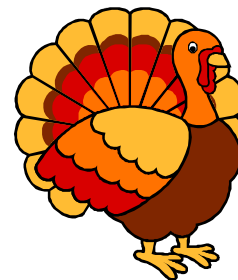
If you have not sent in your 2005 membership form you can bring it to our January meeting or send it to Roxanne Mierow at 5437 Chestnut Drive, Racine, WI 53402.

Birthdays – Let's Celebrate!

- 01/02 Marge Martin
- 01/07 Meg Fleishmann
- 01/07 Mary Ann Staupé
- 01/17 Roxanne Mierow
- 01/17 Maria Rivest
- 01/18 Beverly Curtis
- 01/18 Cathie Rolfson
- 01/21 Joyce Guillien
- 01/25 Christy Schliesmann
- 01/25 Sandy Veit
- 01/29 TC Wiley
- 01/30 Phyllis E. Harvey
- 01/30 Maxine Omdahl



A Quilter's Thanksgiving Event – Update



A QUILTER'S THANKSGIVING EVENT

SATURDAY, NOVEMBER 27, 2004

Sponsored in part by All Saints Hospital's "WORK A LITTLE MAGIC" Program

A wonderful prize from The Fabric Gallery (and we thank them for their generosity!) was awarded to Joyce Guillien who wore a Camouflage Vest!! She was the only one brave enough to wear this!

The event was a huge success with 40 women and teen-age girls attending! At the end of the day, we had 126 quilts in various stages from finished to pieced!

Here is the number breakdown:

Total People Involved:	45
Total who were quilters:	13
Total LHQ only:	1
Total RBO only:	3
Total LHQ/RBO:	9

Here is the percentage breakdown:

Total quilts made:	126
30% made by quilters:	38
12% made by LHQ:	15
18% made by RBO:	23
70% made by All Saints:	88

All Saints Quilt Project

As of this newsletter:

Lighthouse has given 63 quilts to All Saints from 30 quilters or 21% of our membership.

Rainbow has given 64 quilts to All Saints from 6 quilters or 25% of their membership! Let's reach for 100 quilts in 2005.

They are truly needed and used by all the children who get them. I will still coordinate and collect these quilts for 2005.

Call me if you have any questions.

Thanks! Barb Vallone, 262-639-8185



February's Speaker: Phil Beaver

Phil Beaver will present "Finding Your Own Signature In Quilting" at our February 26th meeting. He will also hold a workshop for the weekend prior to the meeting. Phil has an excellent reputation in the quilting world and several LHQ members have already attended his workshops and returned very satisfied and much more knowledgeable.

Phil Beaver's Sunflowers and Poinsettias Quilters' Workshop

Friday, February 25 (half day), Saturday, February 26 and Sunday, February 27

Open to all skill levels.

See November 2004 newsletter for more detailed information.

2005 Program Plans

<u>Month</u>	<u>Name</u>	<u>Topic</u>
Jan	--	Quilto
Feb	Phil Beaver	"Finding Your Own Signature in Quilting"
March	Troy Fabrics Representative	"All You Ever Wanted to Know About Fabrics"
April	Jan Krueger	"I Love Log Cabin Quilts"
May	FunQuilts, owners Weeks Ringle & Bill Keer	"The Modern Quilt Workshop"
June	Judy Zoelzer Levine	"Quilting Room Solutions"
July	--	"Potluck Dinner & Auction"
August	Ann Wanke	"Have a Very Quilty Christmas"
September	Ann Fahl	TBD
October		TBD
November		Holiday Party

Quilt Camps for 2005

Welcome to 2005 and the quilt camps I coordinate. These camps are open to ANYONE who likes the concept of escaping real life for a short time. You don't have to quilt. Each camp offers wonderful vacation options and peace along with good meals – can't say quiet because we aren't!! If you have questions, I will be at the Membership Table with the 2005 Quilt Camp fliers. The next camps with openings are:

March 17-20, 2005 is just around the corner – really!!! As of January 6, we have THREE openings. If you are interested in this camp, please call me or see me at the January meeting. It is not too late to sign up.

May 19-22, 2005 is the Spring Quilt Camp in Door County. We have EIGHT openings for this one and the cost is \$45.00 per day. We will be sleeping and quilting in the new building and it's gorgeous!! The quilters from WE Energies will be sharing the camp with us and they will sleep in the Dining Hall and quilt in the Lodge down by the bluff. We have NO stairs and we can drive to both the sleeping room doors and the quilting room doors! Full payment for this camp will be due by February 15! Yes, May is around the corner, too!!

And don't forget the quilt camp at The DeKoven Center right here in Racine! Drive time and gas cost is excellent plus the meals are delicious and the sleeping accommodations are great.

Dates for 2005 are July 27-31 and November 10-13.

See you at Quilt Camp!!! Barb Vallone, 262-639-8185



Regional Quilt Shows and Programs

January 28 - February 12: Terese Agnew's quilt, "Portrait of a Textile Worker," will be on display at the Sharon Lynne Wilson Center for the Arts in Brookfield. This 8' x 9' art quilt is made out of thousands of clothing labels and shows the image of a Bangladesh woman working in a textile factory.

February 14 - March 13: Terese Agnew's quilt will be on display at the Overture Center in Madison.

Information for both of these exhibits is available at www.wilson-center.com or www.tardart.com and <http://www.jsonline.com/onwisconsin/arts/dec03/192093.asp> and by calling Betsy Gomoll at 262-781-9470.

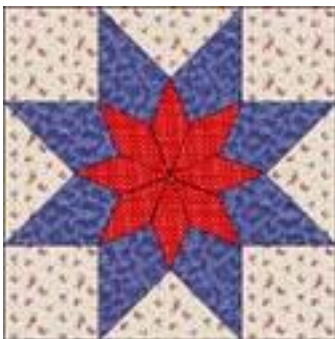
February 5 & 6: Wisconsin Quilters, Inc. Winter Meeting at Sheraton Four Points in Brown Deer, WI. Guest presenters Jo Morton and Ann Fahl. Saturday lectures topics are "Decorating with Small Quilts," and "Ann's Quilts and Inspiration." Their Sunday workshops are "Prairie Patches," and "Designing with Triangles." Contact Ruth Rohlring for registration information: 639-2915 or rohlring@execpc.com.

March 4, 5 & 6: Quilters Land Cruise featuring "Quilts with Baskets" at Radisson Inn Harbourwalk in Racine. <http://www.quilterslandcruise.com>

March 14, 15, 16: Debbie Caffrey workshops and lecture in Jackson, WI. Sponsored by It's a Stitch Quilt Guild. Contact Judy Hagberg at 262.628.0511 or busyquilter@cs.com

April 30: Wisconsin Quilters Inc Schoolhouse Demonstrations by WQI members. Watch for further information.

Don't forget to stop by the Open House and Class Sampler at Sew 'N Save on Saturday, January 15th. The hours are 10am to 2pm.



Christmas Party November 29, 2004 Minutes

The 2004 Christmas Party (the final meeting of the year) was held at the Roma Lodge and began with a Social hour at 6 pm. The President, Betty Suiter, welcomed the membership and offered a table prayer before dinner at 7 pm.

Cindy Falendysz directed members to the buffet table for dinner after which Jayne Steffens introduced the evenings entertainment. The Celtic/Folk Music band, "Bohrer Moraim" (aka Roadkill), entertained us with a selection of their special Irish music and Christmas carols.

Following the program, Show and Tell culminated with a preliminary showing of the Lighthouse Legacies Quilt Show raffle quilt by Quilt Show Chair, Nancy Wilant. It is a stunning quilt containing blocks of various lighthouses.

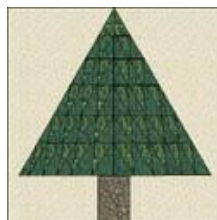
Table centerpieces served as Guild door prizes with a member at each table winning it.

Jim Deibler, this evening's special guest and owner of Sew 'N Save and The Fabric Gallery, generously donated eight gift certificates won by drawing of attendees names.

Marie Raymond, winner of last year's raffle, presented the Christmas party raffle quilt. Betty Suiter thanked Marie and her committee for their beautiful work. The lucky winner of this years raffle was Janet Kuhl.

Betty Suiter, who will remain as Guild President, introduced the 2005 Board:

- Vice President/Programs: Autumn Latimore
- Vice President/Planning: Barb Englander
- Secretary: Lois Pederson
- Treasurer: Mary Piper
- Membership: Roxanne Mierow and Joyce Guillien
- Hospitality: Maria Rivest
- Newsletter: TC Wiley and Angela Balazs
- Librarian: Regina Scott-Brooks
- Historian: Bev Simon
- Publicity: Ruth Rahlfing



Betty then introduced the 2004 Board and thanked them each for their fine service with lovely handmade pin cushions. Following Betty's presentation, Barb Salisbury presented Betty with a Friendship quilt wall-hanging, the blocks of which were made by the 2004 Board Members.

There will be a combined Board meeting on Monday, Dec. 6th at the Church of the Resurrection. The 2004 Board should be prepared to turn over files and materials, including their job descriptions, to the new 2005 Board. Anyone unable to attend should let Betty know.

After a very enjoyable, festive evening, the meeting was adjourned at 8:40pm.

Respectfully submitted,
Barb Englander, Recording Secretary



LHQ Membership Form

Please complete this form and return it with your \$25.00 check made payable to *Lighthouse Quilters Guild*. You have two choices:

1. Bring it to the January 31, 2005 Meeting; or
2. Mail it to Roxanne Mierow at 5437 Chestnut Drive, Racine WI 53402

Please note that we need a new form each year for our records.

Remember that all Lighthouse Quilters Guild members are expected to serve one month a year on the Hospitality Committee.

You may sign up at our November or January meetings. Thank you!

Name _____ NQA Member * Yes No

Address (summer) _____ Months _____

City _____ State _____ Zip Code _____

Address (winter) _____ Months _____

City _____ State _____ Zip Code _____

Home Phone _____ Years of Quilting _____ Birthday _____

Work Phone _____ E-mail address _____

Choose one: Newsletter via e-mail Newsletter by snail mail

Yes, I am interested in serving on the Board in the following position(s):

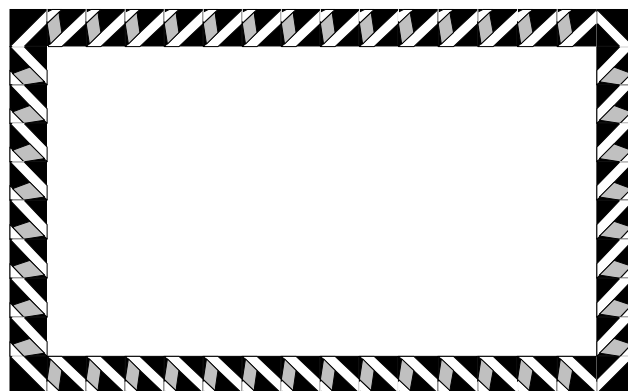
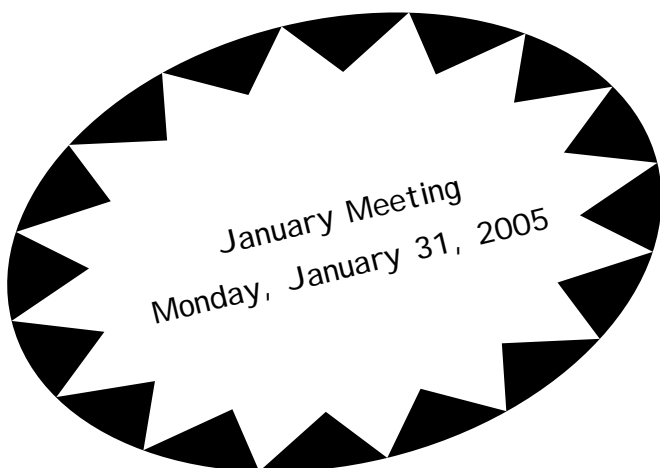
No, I do not wish to serve on the Board at this time.

Deadline is January 31, 2005

** The National Quilting Association requests a count of guild members that are also members of the NQA along with their NQA membership numbers and expiration dates.*

NQA Member Number _____ Expiration Date _____

FOR MEMBERSHIP USE ONLY	
PAID: <input type="checkbox"/> Check <input type="checkbox"/> Cash	CARD GIVEN: <input type="checkbox"/> Yes



Hospitality Committee: January 2005

January 2005 Hospitality Committee

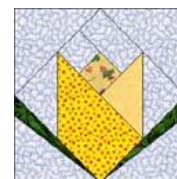
Chairperson: Jayne Steffens 638-9221

Committee members please contact Jayne.

- TC Wiley
- Cindy Byers
- Betty Suiter
- Gayle Gottfredsen
- Cindy Falendez
- Autumn Latimore
- Barb Englander
- Pat Limburg
- Roxanne Mierow
- Barb Salisbury
- Pat Barry
- Marie Raymond
- Barb Jozwiak



The theme is: Chips and Soda



Newsletter Editors:

T C Wiley - tcwiley@sbcglobal.net

Angela Balazs - angela@balazs.net
