



# Lighthouse Quilters Guild

February 2008

## Joyce's Jewel Box Notes

Before I started to write this, I had just finished my second day of blowing snow. Oh! We do live in Wisconsin. Any way enough already! I spoke with my son, he lives in N.Y.C. and he said the temperature there was in the 70's.

The board and I had a very fruitful meeting on Monday. After a few things can be worked out, we will report to you. I am looking forward to the guest speakers this year. The programs are quite varied and sound very interesting. I want to give a hats off and applause to Mary Schaeffer & Sue Nelson for a job well done.

We a can always learn something new. I hope that everyone will find something that will tweak his or her interest and sign up for a program. Happy quilting & stay warm.

**Joyce S. Herringer**

## Inside This Issue

2008 Programs	2
Regional Quilt Shows	3
Membership Form	4
Charity	5
January Meeting	6
Board Meeting	7-8
Quilting Opportunities	9

## CRAYON COLOR CHALLENGE HONORED

All Saints Foundation has chosen to honor the Crayon Color Challenge that was featured at our 2007 Lighthouse Legacies Quilt Show. Nancy Wilant and Barbara Vallone accepted a very nice trophy on January 24 on behalf of ALL the quilters who participated and made 99 beautiful little quilts.

Thank you to everyone who was a part of this first Crayon Color Challenge.



## Next Meeting

Things to bring Monday, February 25 at Lutheran Church of the Resurrection:

- Show 'N Tell
- Your Name Tag
- Membership Form

## Newsletter Articles Due

The deadline for submitting articles is the first Friday of each month. Submit your articles to:

Tammy Richel at

Richelfamily@yahoo.com

## 2008 LHQ Board

NQA Chapter WI 727

President

Joyce Herringer

Vice President of Programs

Mary Schaeffer

Vice President of Planning

Sue Nelson

Secretary

Kay Rigert

Treasurer

Cecilia Johnson

Hospitality

Jody Knudtson

Membership

Dianna Zimmerman

Joyce Guillien

Librarian

Kathy Lijewski

Historian

Sandy Veit

Publicity

Ruth Rohlfing

Newsletter /

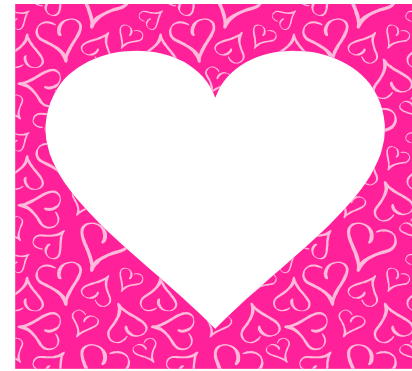
Website Coordinators

Andy Fahl

Linda Anderson

Tammy Richel

Richelfamily@yahoo.com



## 2008 Programs

February 25	Maribeth Schmit - <i>What a Judge is looking for</i>
March 31	Jan Kreuger - <a href="http://www.hearthsidequiltersnook.com">www.hearthsidequiltersnook.com</a> - <i>The Quilting Bandit</i> (finishing your tops)
April 28	Val Lewis - <i>Dyeing Fabric</i>
May 19	Cathy Miller - <a href="http://www.singingquilter.com">www.singingquilter.com</a> - <i>The Singing Quilter</i>
June 28/29 Sat/Sun	Workshop: <i>Elements: Earth, Air, Fire and Water</i>
June 30	Laura Cater-Woods - <a href="http://www.cater-woods.com">www.cater-woods.com</a> - <i>Fabrications - A True Story</i>
June 30 Mon	Workshop: TBD
July 28	UFO Bag Exchange - Making Cards for Soldiers
August 25	Suzanne Myers Otto - <i>Art to Wear with a Quilter's Flare</i>
September 29	Kay Sorensen - <i>Creating Spectacular Quilts</i>
TBD	Workshop - full-day
October 27	Linda Halpin - <a href="http://www.lindahalpin.com">www.lindahalpin.com</a> - <i>Quiltmaking Today: Traditional Patterns and How They Change</i>
October 27 Mon	Workshop: <i>Quilter's Playbook</i>
November 24	Holiday Party

## Regional Quilt Shows & Programs

**January 30 - through March 9:** Northlight Theatre in Skokie, IL "Gee's Bend." contact 847-673-6300; [www.northlight.org](http://www.northlight.org)

**Through April 6:** Wisconsin Museum of Quilts & Fiber Arts, "Needle Felting: Quilts, Art Objects, WEarables," N50 W5050 Portland Rd, Cedarburg, WI. Details, hours, and cost available at 262 546-0300 and [www.wiquiltmuseum.com](http://www.wiquiltmuseum.com)

**March 7 - 9:** 12<sup>th</sup> Annual Quilters Land Cruise, "Quilts with Half-Square Triangles," Radisson Inn Harbourwalk, Racine, WI. Schedule includes lectures and classes, instant quilt show, half-square scramble, friendship block exchange, and door prizes. Instructors: Pat Baake, Barbara Vallone, Maribeth Schmit, Lois Pedersen, Linda Marcou, and Maureen Kurhajec. New: Quilt Retreat on the Sun Deck with Wendy Butler Berns. Brochures available at LHQ meeting or online at [www.quilterslandcruise.com](http://www.quilterslandcruise.com)

**March 14-15:** West Suburban Quilters' Guild, "A Symphony of Quilts," Mount Mary College, 92nd & Burleigh, Milwaukee, WI. Friday 10-7:00pm; Saturday 10-5:00pm. \$5.00 admission. Special event Friday eve: Kay Steinmetz & Kay Montgomery. Tickets \$5.00. Contact [www.wsqg.net](http://www.wsqg.net)

**March 14-15:** Fox Valley Technical College, "7th Annual Sewing & Quilting Expo," Fox Valley Tech College, Riverside Campus, 150 N Campbell Rd, Oshkosh, competitions. Info at LHQ Events table or at [www.fvtec.edu/ContinuingEd](http://www.fvtec.edu/ContinuingEd). **Entry deadline February 29**

**March 15 - 16:** Evergreen Quilters' Guild, "Silver Threads: 13<sup>th</sup> Biennial Quilt Festival," Ashwaubenon High School, 2391 Ridge Road, Green Bay, WI. Saturday 10-5pm; Sunday 10-4pm. Raffle, vendors, challenge, etc. Contact [Reichertr4@aol.com](mailto:Reichertr4@aol.com); [www.geocities.com/evergreenguild](http://www.geocities.com/evergreenguild)

**March 29-30:** Crazy Quilters Guild, "21st Annual Quilt Show," Parkview Middle School, 930 N. Rochester (Hwy 83 & Hwy NN), Mukwonago, WI. Saturday 9-4:00; Sunday 11-4:00. \$5.00 admission. Special division: Black, White and Brights using any technique. Contact: Cindy Osinski at 262 363-3761; [cosinski@wi.rr.com](mailto:cosinski@wi.rr.com) **Entry deadline March 19**

**April 6-8:** Prairie Heritage Quilt Show, St. Albert's Center, 2420 St. Albert the Great Dr, Sun Prairie, WI. Contact Klaudeen Hansen, 608 837-2298 **Entry Deadline: March 20**

**April 6-8:** Antique Quilt Display, Sun Prairie Historical Library & Museum, 115 E. Main St (1 blk west of JJ Stitches), Noon to 4:00 Sunday thru Tuesday. Free.

**April 11-13:** International Quilt Festival, Chicago, Rosemont, IL. Quilts Inc; 713 781-6864; [shows@quilts.com](mailto:shows@quilts.com); [www.quilts.com](http://www.quilts.com)

**April 22-27:** American Quilter's Society, "2007 Quilt Show and Contest," Paducah, KY. 270 898-7903; [shows@aqsq quilt.com](mailto:shows@aqsq quilt.com); [www.americanquilter.com](http://www.americanquilter.com)

**May 3 - 4:** It's a Stitch Quilt Guild, "12<sup>th</sup> annual Quilt Show: Winter Wonderland," Kettle Moraine Lutheran High School, 3399 Division Rd - County G, Jackson, WI (1/2 mile south of 60). Saturday 10-4:00, Sunday 10-4:00. \$5.00 admission. Special exhibit of "Alzheimer's: Forgetting Piece by Piece." Entry forms available at LHQ. Contact Kathy at 262-338-0054 **Entry deadline: April 11**

**June 19-21:** NQA, "39th Annual Quilt Show", Columbus, Ohio. 614 488-8520; [coordinator@nqaquilts.org](mailto:coordinator@nqaquilts.org); [www.nqaquilts.org/2008show](http://www.nqaquilts.org/2008show)

**June 26-28:** Minnesota Quilters, "Quilted Jewels: A 30th Celebration," Mayo Civic Center, Rochester, MN. Judged and non-judged exhibits, special events and speakers, challenge, classes, vendors. Registration booklet at LHQ Events table. Information and on-line registration at [www.mnquilt.org/mq2008](http://www.mnquilt.org/mq2008) **Non-judged deadline May 1; judged deadline April 23**

See the Events Board at the next LHQ meeting for details of these events

Roth Rohlfing 262.639.2915 or [rohlrfing@execpc.com](mailto:rohlrfing@execpc.com)

## 2008 Membership Form

### Lighthouse Quilters Guild, Inc.

Please complete this form and return it along with your \$25.00 check - make payable to *Lighthouse Quilters Guild Inc.* You may sign up at our January or February meetings. **Note: In order to be included in the 2008 Membership Directory, your dues and this form must be received by February 28, 2008.**

- If you want your membership card mailed to you, please include a self-addressed stamped envelope with this form.
- Please note that we need a new form each year for our records.
- Remember that all Lighthouse Quilt Guild members are encouraged to:
  1. Serve one month a year on the Hospitality Committee and
  2. Make a quilt for one of our charities.

Name \_\_\_\_\_ NQA Member\* Y N

Address (summer) \_\_\_\_\_ Months \_\_\_\_\_

City \_\_\_\_\_ State \_\_\_\_\_ Zip Code \_\_\_\_\_

Address (winter) \_\_\_\_\_ Months \_\_\_\_\_

City \_\_\_\_\_ State \_\_\_\_\_ Zip Code \_\_\_\_\_

Home Phone \_\_\_\_\_ Years of Quilting \_\_\_\_\_ Birthday \_\_\_\_\_

Work Phone \_\_\_\_\_ Cell Phone \_\_\_\_\_

E-mail address \_\_\_\_\_

Choose one:    Newsletter via e-mail \_\_\_\_\_    Newsletter via snail mail \_\_\_\_\_

\_\_\_\_\_ Yes, I am interested in serving on the Board in the following position(s):

\_\_\_\_\_

## LIGHTHOUSE CHARITY QUILT PROJECTS FOR 2008

At our January meeting 12 charity quilts were given. A sincere thank you to those who contributed. What a nice big number to start the year. If we continue to donate at that rate we would total 144 quilts by December. That would meet the LHQ goal - approximately one charity quilt per person per year. Let's all step up and do our part to meet that goal.

Two members will distribute quilts this year.

Carolyn Christensen (with Sandy Veit's help)

HALO in Racine

Women's Resource Center in Racine.

Barbara Vallone will oversee the Quilts for the Community, which includes

Wheaton Franciscan NICU(infants) in Racine

Milwaukee Children's Hospital (all youth ages up to 18)

Kenosha Hospice Alliance

Operation Snuggles (for children of troops in combat & VA hospital patients)

Ridgewood Nursing Home in Racine

Remember, each quilt should have a paper tag on the back with your name

agency receiving the quilt ~ If you don't want to choose, just write "Any Charity" on your slip of paper. If you have another charity you personally want to give your quilt to, please let us know so we can keep an accurate count of how many charity quilts Lighthouse members make in 2008.

washed or not washed (we really encourage you to wash the quilt)

The quilt size can range from 36" x 36" to twin. It can be square or rectangular. Operation Snuggles takes crocheted or knitted afghans in lap quilt sizes. Women's Resource Center and HALO welcome pieced, cheaters, fleece, crocheted and knitted items.

Beginning with the February meeting we will have a tabletop display just for charity quilts. It will include a running total of donations for the year as well as guidelines about LHQ charity quilts. Here you will find paper tags with pins to identify your donation and extra "service pins" to put on your name tag. We will also have two clothesbaskets at this table where you can drop your quilt after Show n Tell. We hope this simplifies things for you and for Carolyn and Barbara who volunteered to count and distribute the quilts.

We welcome your suggestions and encourage you to participate in this project. THANK YOU

### **February Hospitality News**

February Hospitality volunteers—We have almost 150 members, with about 100 at a meeting. Please bring enough food for this amount. If you can't make it, please let your chairperson know and get a replacement. You could switch months with someone else.

## Lighthouse Quilters General Meeting Minutes

January 28, 2008

The President, Joyce Herringer, called the meeting to order at 7 PM and welcomed all visitors and returning members.

### **Program**

Mary Schaeffer introduced our speaker Katie Pasquini Masopust. Katie's presentation was on "Painting with Fabric." This program was very entertaining. Katie grew up in California where men are men and trees are trees. She currently lives in New Mexico, where men are men and trees are bushes. She enjoys quilting, photography and painting. Two workshops were held in conjunction with the presentation. The Saturday and Sunday workshop was entitled "Abstract and Nonrepresentational Quilt Design" and the Monday workshop was "Color Theory." The workshops were held at the Sienna Center. During Show and Tell members who participated in the workshops shared their projects. Katie's website is [www.katiepm.com](http://www.katiepm.com).

### **Announcements:**

Joyce mentioned the February workshop is cancelled.

There was a bit of a snafu with the January newsletter due communications and printer issues.. Members were asked to confirm e-mail addresses. Snail mail newsletters were mailed out on Saturday, January 25<sup>th</sup>.

Kathie Wilson talked about the Racine Barn Project. This is similar to a project in Ohio/Iowa, using quilt patterns painted on 8 ft x 8 ft frames to be hung on wooden barns throughout Racine County. Wisconsin Quilt Tourism will print a map indicating the location of the barns and place a sign at the mailbox with the name of the block and a bit of history about the farm. Racine Tourism will publish a brochure. Volunteers are needed to draw the grid and paint the patterns – please contact Kathie.

**Show and Tell:** Members were very busy since last meeting – lots of beautiful quilts were shown during Show and Tell. Lijewski

### **Pillowcase Project:**

- Lois Pedersen and a group of 14 folks packed 23 packages to take to the post office for shipment to soldiers. Lois spent \$110 (of her own money) to send these packages. Commander, Legion of Honor, Tripoli Shrine, Robert Lijewski reimbursed Lois for this expense.
- Lois announced 2550 pillows cases have been made to date with an additional 40 at home. Jody Knutson during Show and Tell donated 60 more.

She thanked the guild members for their generosity.

Then came the drawing for numerous door prizes. The meeting concluded about 9 PM and members enjoyed conversation and cookies.

Respectfully submitted,

Kay Rigert, recording secretary

Lighthouse Quilter's Guild Board Meeting

Date: February 4, 2008

<b>Present</b>	Joyce Herringer	Joyce Guillien	Kathy Lijewski	Jody Knutson
	Ruth Roling	Dianna Zimmerman	Linda Anderson	Sandy Viet
	Kay Rigert			
<b>Absent</b>	<b>Mary Schaeffer</b>	<b>Sue Nelson</b>	<b>Cecilia Johnson</b>	<b>Tammy Richel</b>

**PRESIDENT: Joyce Herringer**

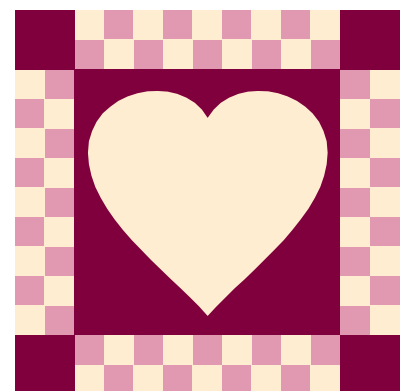
- Joyce discussed the newsletter - sending via US mail, e-mail or have members go to the website to print off the letter when available. Research on the budget amount available, costs of printing/ mailing will be reviewed as well as the cost to update/maintain the website (approximate costs: Kinkos printing \$150.00, mailing 60 newsletter \$82.00 postage, website maintenance \$300.00/year). Discussion was to charge those that would like the newsletter by mail and additional \$6.00 per year for mailing. **To be further discussed at the next board meeting.**
- Two months of hospitality committee will be included in the newsletter.
- Include the membership form in the newsletter
- Add the monthly birthdays to the newsletter
- Mentoring - Dianne Zimmerman will check the list of mentors to confirm they are interested in being a mentor. This program will be coordinated by the membership committee.
- A discussion was held on adding biography and picture of a member to the newsletter or ask a member to stand up and tell a bit about themselves. A prize will be awarded to the member for sharing. The program would be titled Member Spotlight. **To be further discussed.**
- Jody Seally from the Polish Center contacted Joyce about renting the quilt show racks. Discussion was held on where are the racks located (4 Mile Road), what is the cost to rent, can delivery/pickup be arranged. It was decided that the Vice President of Programs would coordinate any rentals. The fabric cloths need to be cleaned. How and where are the cloths stored? **More information is need, to be discussed at the next board meeting.**

Each committee member will prepare a job description.

**REPORTS:** None

**VICE PRESIDENT OF PROGRAMS:** Mary Schaeffer

**VICE PRESIDENT OF PLANNING:** Sue Nelson



**SECRETARY: Kay Rigert**

- In the past the Secretary has sent out thank you notes to the guest speakers. This responsibility will be shifted to the Vice President of Programs.
- The church has agreed to let LHQG have an additional file cabinet. The materials to be stored here are old meeting minutes, quilt show supplies, historian books, etc. Kay will contact Regina to find about an additional a cabinet.

The board members should pull out a logo for the next meeting.

**TREASURER: Cecilia Johnson**

**REPORTS: N/A.**

**HOSPITALITY: Jody Knudtson**

- Hospitality will set-up the chairs before the meeting, members will pick their chairs and put them away at the conclusion of the meeting. This will be announced at the guild meeting.

*Website needs to be cleaned, if you Google your phone number. Contact Andy Fahl.*

**NEWSLETTER: Tammy Richel, Linda Anderson**

**MEMBERSHIP: Joyce Guillien, Dianna Zimmerman**

Membership cards are available - cross out the date write in 2008

**LIBRARIAN: Kathy Lijewski**

**HISTORIAN: Sandy Veit**

**PUBLICITY: Ruth Rohlfing**

- Ruth will continue to do the charity pins.
- LHQG is not listed in the Racine Arts Council Program. The program and workshop with Katy was listed. She will follow-up on this item.
- The bookmark will be updated. LHGQ will pay for 50% of the printing. Ruth will follow-up with First Friday and Rainbow Quilters to find out if each group will cover 25% of the printing costs.
- Ruth will coordinate the Grant. She will ask Rozanne Mierow if she is interested in coordinating the grant.

Ruth will provide the newsletter editors details (size, organizations, and instructions for donating) for the Charity Quilts. The guild will keep track of the number of quilts donated and the organizations).

The next board meeting is to be held on March 3, at 7:00 in the lower level class room.

The meeting concluded about 9: PM.

## "STUDIO TIME" SCHEDULED AT RESURRECTION

Do you need quality time to work on your project(s)? We have just the thing --come to Resurrection's Fellowship Hall on any of the following weekends to work on whatever you need or wish to finish!

Bring your sewing machine, extension cord, Ott light, and everything you will need to make significant progress on a project or two. Barbara Vallone will be available for help or suggestions if needed!

Dates are: Friday/Saturday, April 18 & 19, and November 7 & 8

Times are: Fridays from 3 pm to 9 pm and Saturdays from 9 am to 4:30 pm

Costs are: \$5 each day or \$10 for both Friday and Saturday

You can come to one day, one weekend, or ALL! Friday supper will be decided by those attending. Saturday lunch will be a Brown Bag Pot Luck ~ bring a sandwich or salad for yourself and a finger snack to share (chips, popcorn, cookies, etc. but nothing messy, please!)

We can take 20 to 30 quilters. You can sign up for April or November at any Lighthouse meeting before the event. Or by contacting Barbara Vallone, 262-639-8185, QltingB@aol.com

## QUILT CAMP OPENINGS FOR 2008

The following Quilt Camps have openings for 2008:

March 26-30, Lutherdale on Hy 12 near Elkhorn, \$48 per night

April 24-27, Lutherdale on Hy 12 near Elkhorn, \$175 for the weekend

May 15-18, Camp Zion in Door County, cost TBD

May 29-June 1, Conference Point on Geneva Lake in Williams Bay, cost varies depending on nights/meals

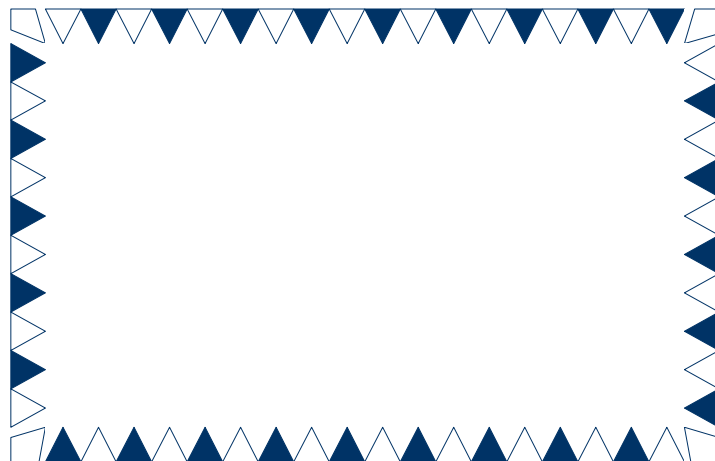
These quilt camps are open to all quilters and non-quilters who want to escape from real life for a while.

Please contact Barbara Vallone at 262-639-8185 or QltingB@aol.com for complete information.

## Plan Your Mini-Grant Project Now

It's not too soon to develop a community or school project that can be supported with funds from a LHQ mini-grant. Any member can apply for a grant. The money must be used to promote quilting or the textile arts. Possible uses include buying supplies, tickets to an exhibit, or for transportation to an event. The total amount budgeted is \$250.00. This could be given to one project or divided up to support several projects. Applications are due by September 1, 2008. For guidelines and an application contact Ruth Rohlfing at 262-639-2915 or [rohlfing@execpc.com](mailto:rohlfing@execpc.com)

Lighthouse Quilters Guild  
P. O. Box 372  
Racine WI 53401  
[www.lighthousequiltersguild.org](http://www.lighthousequiltersguild.org)



**Newsletter Editors / Website Coordinators**

Linda Anderson [linand@milwpc.com](mailto:linand@milwpc.com)

Tammy Richel [Richelfamily@yahoo.com](mailto:Richelfamily@yahoo.com)

*February Hospitality*

Chairperson: Jody Knudtson