



# Lighthouse Quilters Guild

June 2010

## Kay's Turkey Tracks



I am writing my article for the newsletter on Memorial Day. I am truly grateful for those who have served and to those who are serving our country to preserve and protect our freedoms. I say, "Thank you!"

I'd like to thank Lois Pederson for her efforts in coordinating the pillowcase project for the soldiers. This effort started five years ago, in May 2005. To date, the number of pillowcases made by members has reached 5006. Thank you! I would also like to thank Mary Bielefeldt and Pat Brown for volunteering to continue this community service project. And a thank you to everyone who has made a pillowcase!

The guild has some *wonderful resident experts* - Debbie Blaustein sharing "Cotton Theory Rugs" - I want to make at least a couple (along with all the other projects I have started), Barb Vallone demonstrating Bindings You Can Do, Roxanne Mierow presenting the clips from "The Quilt Show" - Lighthouse in the news, and lastly, Stevie Breit making curved paper piecing look so easy. Thank you, ladies, for demonstrating!

Speaking of projects, I think it's time for me to head to my sewing room and get busy! Or maybe since the weather is so nice I should go outside . . .

See you at the June meeting!

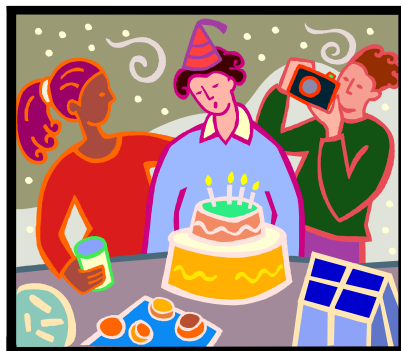
Kay

## Inside This Issue

2010 Programs	
June 28th program	2
Rummage Sale	
Lighthouse Charity Quilt Projects	3
Thank you Notes	
American Quilts at the Milwaukee Museum	
Sew 'n Save & The Fabric Gallery News	4
More Rummage Sale News	
Milwaukee Art Museum Exhibition & Coupon	5
AQSQ 30's for 30 Challenge	
Regional Shows & Events	
Road Trip! Quilt Shops to Visit	6
Lighthouse General Meeting Minutes - May 24	7
Hospitality	8

## June Birthdays to Celebrate!

Cecilia Johnson	6-3
Judy Hylton	6-4
Pat Burmeister	6-9
Carol Nelson	6-13
Christine Cielenski	6-14
Marie Raymond	6-16
Susan Pehlivanian	6-20
Barbara Vallone	6-24
Dianne Benefiel	6-26
Judy Barnes	6-28



## Next Meeting

Things to bring Monday, June 28, 7:00 PM at Lutheran Church of the Resurrection

- Name Tags
- Show & Tell
- Charity/Donation Quilts

## Newsletter Articles Due

The deadline for submitting articles is the first Friday of each month. Submit your articles to:

Monica Bissen at [mbbissen@wi.rr.com](mailto:mbbissen@wi.rr.com)

## 2010 LHQ Board

NQA Chapter WI 727

### President

Kay Rigert

### Vice President of Programs

Jayne Steffens

### Vice President of Planning

Roxanne Mierow

### Secretary

Debbie Boice

### Treasurer

Janet Kuhl

### Hospitality

Deborah Gillmore

### Membership

Stevie Breit

### Librarian

Mary Bielefeldt

### Historian

Louise Selkove

### Publicity

Kitty Friend

### Newsletter/ Website Coordinators

Monica Bissen

[mmbissen@wi.rr.com](mailto:mmbissen@wi.rr.com)

Debbie Blaustein at

[dblaustein@wi.rr.com](mailto:dblaustein@wi.rr.com)

### Webmaster

Jennifer Janzer

## 2010 Programs

June 28	<b>Kit Quilts - Rosie Werner.</b> Enjoy the stories of 20th Century kit quilts and, even better, see them up close and personal.
July 26	<b>Picnic.</b> A favorite annual event.
August 30	<b>Dancing on Your Quilt - Ann Fahl.</b> Racine's own Ann Fahl will share many do-able techniques from her brand new book "Dancing with Thread."
September 26-27	<b>Workshops &amp; Presentation - Susan Cleveland.</b> (Co-sponsored by The Fabric Gallery at Sew 'N Save.) <u>Workshops:</u> 9/26, 10:00-1:00: <b>Marvelous Miters</b> 9/26, 2:00-5:00: <b>Plain &amp; Perfect Binding</b> 9/27, 9:00-4:00: <b>Piping Hot Binding</b>  9/27, 7:00 Guild Program: <b>My Eclectic Quilt Pageant</b>  For workshops, register with Jayne Steffens, <a href="mailto:foxdance@wi.rr.com">foxdance@wi.rr.com</a> , or 262-638-9221.
October 25	<b>What a Judge Looks For - Maribeth Schmidt.</b> A certified judge discusses standards, common mistakes, and how to increase your chance for success in the world of quilt competition.
November 29	<b>Christmas Party.</b> Guaranteed to be an enjoyable finale for a year of learning and sharing.

### Everything You've Always Wanted to Know About Kit Quilts

Our featured speaker at the next Lighthouse meeting on June 28<sup>th</sup> is Rose Marie Werner, a nationally recognized expert on Kit Quilts. Kit Quilts are those bright, pretty quilts we see from the middle of the 20th Century. They came in many different ways - drawn, precut or just a pattern. Rose Marie has been collecting and documenting these quilts for years and will bring part of her collection to show us. Plan to join us on Monday, June 28th at 7:00 pm for a program that will be educational, inspiring and fun!



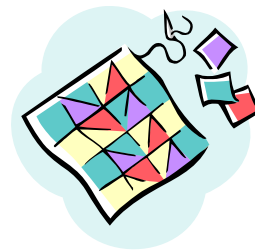
### Time to Start Collecting for the RUMMAGE SALE !!!!!!!

Once again, Lighthouse Quilters Guild will hold a rummage sale with proceeds going to the Guild. This is your chance to really "finish off" your UFO's by bringing them to the sale and giving someone else the opportunity to complete them. We will have \$1, \$3, \$5 and Silent Auction tables - you decide on which table your treasures

go. The Rummage Sale is part of our Annual Picnic on July 26th, so bring your items with you to the picnic (or bring them to the June meeting and we'll have a collection basket.) This is a great way to help the guild and maybe find yourself some new treasures.



## LIGHTHOUSE CHARITY QUILT PROJECTS FOR 2010



Two members will distribute quilts this year:

Carolyn Christensen for HALO and Women's Resource Center

Barbara Vallone for Quilts for the Community which includes:

- All Saints NICU, Racine, and Children's Hospital, Milwaukee
- Ridgewood Nursing Home plus other Racine assisted living and nursing homes **including Becker Shoop's request for small wall hangings.**
- Operation Snuggles - quilts for soldiers' children and soldiers' quilts.\*

Please visit our Charity Quilt display which has:

- A slip of **paper** for you to indicate WHERE your quilt should go and circle if it is WASHED or not.
- A baby quilt **pin** for you to add to your name tag.
- A **place** to leave your quilt (two wash baskets!) before OR after Show & Tell.

**Quilt size** can range from 36" x 36" to twin bed; square or rectangular. \*Operation Snuggles has asked that the Soldiers' Quilts be at least 60 x 70 Inches. Women's Resource Center and HALO welcome pieced, cheaters, fleece, crocheted and knitted items.

**We now have 9 wall hangings for Becker Shoop Nursing Home** at 6101 - 16th Street, and they need about 24. This is a good place for those wall hangings that are still nice but don't have a place in your home anymore. Jayne Steffens will help coordinate this new "Quilts for the Community" project.

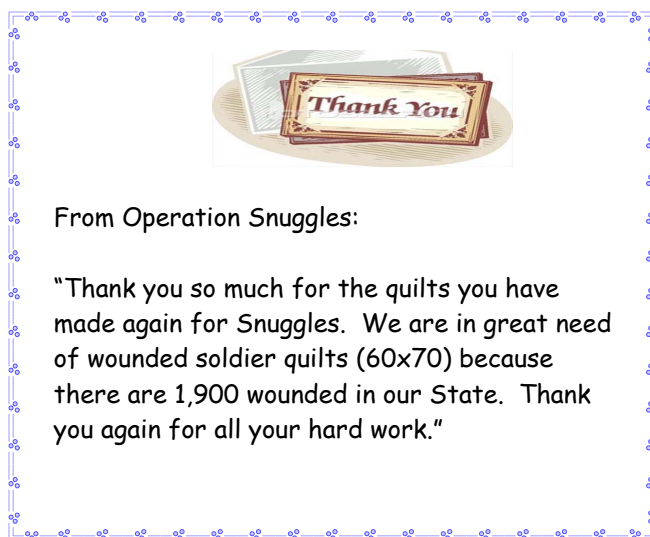
We welcome your suggestions and encourage you to participate in this project. **Free fabric kits are available for anyone to "play" with and "create"!!!! Let me know if you want one!**

THANK YOU for continuing to make this project such a success.

Barbara Vallone

## QUILTS FOR THE COMMUNITY

We have received two nice thank you notes:



## AMERICAN QUILTS at the MILWAUKEE MUSEUM

I just had to share what I saw when I visited the Milwaukee Art Museum (MAM) on May 25 and I hope everyone can see this one because it is an amazing exhibit of quilts made between the early 1700s and the mid 1800s. The white work and whole cloth quilts are stunning. You will see stenciled quilts, stamped quilts, toile print quilts, political quilts, Broderie Perse quilts that use not only the Indian palumpures but large print fabrics! These very old quilts used techniques that we think are NEW!!!

**Gallery Talks** are free with your admission of \$12 or \$10 for seniors. I did the Exhibition Overview on May 25 and it was excellent. These talks are on Tuesdays at 1:30 pm and the remaining two are June 15, "Quilts as Repositories of Memory" and July 27, "Quilts Through Time". These talks last 45 minutes. MAM hours are TUES-SUN 10 am to 5 pm and THUR until 8 pm. Closed MON.


**Express Talks** are every Thursday through September 2 at 12 noon and these are just 30 minutes.

Directions to the MAM are easy and, yes, you can avoid I 94 construction, Hy 32 south of Hy 11 construction, Hy 38 construction, and all the Milwaukee construction:


Take Hy V which begins at Hy 20 and heads straight north. At Oakwood Road, go right. At Pennsylvania Avenue, go left. Pennsylvania Avenue becomes 794. Watch for the signs. You will cross the Hoan Bridge over Summerfest and get off on Michigan Ave and immediately go right. Parking is UNDER the MAM and it's \$9 for 3 hours. Cheaper parking at a flat \$5 is the lot on the north side of the War Memorial Museum which is connected to MAM. To get back on 794, you turn left where it says "To 94 & 43" because these will go right and 794 goes straight. This is a lovely drive with NO construction.

Feel free to contact me if you have any questions, or see me at our June meeting.

Barbara Vallone



### More events at Sew 'n Save and The Fabric Gallery



Sew 'n Save is having a  
**GARDEN PARTY**  
sponsored by **The Elna Sewing Machine Company**

Are you contemplating a new embroidery machine in the near future?

This is a presentation you will not want to miss!

Thursday, June 24th or Friday, June 25th, 10am til 1:30pm.

Call the store for more details. Seating is limited...Sign up soon!

### Christmas is coming.....

Everyday more Christmas fabric is hitting the shelves - just for YOU!

We have received about 1/3 of our holiday fabric and, as it arrives daily, it is put out for you to see.

Samples are underway to inspire you....

Come and see the excellent offerings for this upcoming season.

Remember Christmas fabric cannot be re-ordered, so first come, first served.

### Quilt Expo in Madison, Wisconsin

For your planning pleasure, we will again be hosting a coach bus to take you to **Quilt Expo** in Madison.

We have begun the "interested lists" for both Friday and Saturday, September 10th and 11th.

\$40 gets you there and back and includes entry into the show!

The best way to get there.....on the Sew 'n Save bus.

Check our website for more info on these events and more.

[www.sewnsaveracine.com](http://www.sewnsaveracine.com)

### **Are you on Facebook? So are we!**

Check us out and click on the "Like" button and you'll be updated on new fabrics, patterns, classes and general goings-on at Sew 'n Save and The Gallery.

## MORE RUMMAGE SALE NEWS

Do you have a relative or a friend that makes things that would be useful to quilters? Would you like to let the Guild know about these products? Then the July meeting is your chance! We would like to have a table with flyers, brochures or other info on products made and sold by us and those we hold dear. The products should be related to quilting - i.e., quilt racks, ruler racks, bobbin holders, or something similar. We are just looking for info, not for people to actually come and sell, since space is an issue. So let us know what you have, and we will open our wallets!



## American Quilts: Selections from the Winterthur Collection

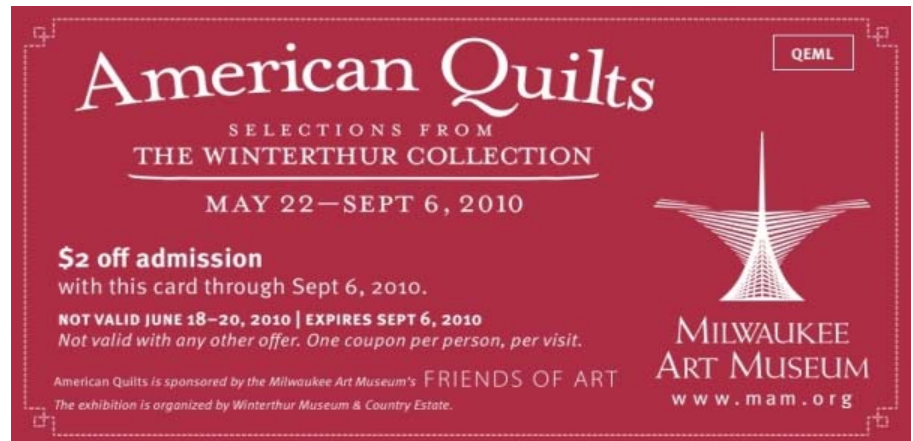
May 22-Sept 6, 2010

*Uncover rich stories, hand-stitched into exquisite works of art*

The Milwaukee Art Museum would like to invite you come see our upcoming exhibition, *American Quilts: Selections for the Winterthur Collection*. The exhibition will showcase 40 uniquely crafted quilts that document women's political, social, and cultural lives in the formative period of the early American republic. Learn about this special time in American quilting history and connect with others who share your passion for quilting.

As an incentive to visit this great exhibition, we would like to extend to you an offer to visit at a discount. Present this coupon when you visit the Milwaukee Art Museum between May 22 - September 6, 2010, you will receive \$2 off of your admission. We encourage you to share this discount with your Quilting or crafting community, and look forward to seeing you at the Milwaukee Art Museum. (Please note that the coupon is not valid June 18-20, 2010.)

**Milwaukee Art Museum**  
700 N. Art Museum Drive  
Milwaukee, WI 53202  
P: 414.224.3294



## 30's for 30 Quilt Block Challenge

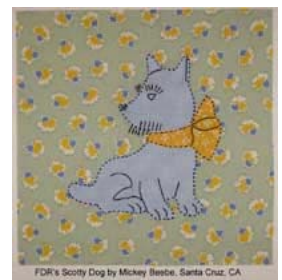
The American Quilt Study Group (AQSG), a non-profit organization dedicated to preserving the history of quilts and quiltmaking, is turning 30 and has announced a nationwide block challenge called "30's for 30". For every 30 blocks received, one person's name will be drawn to win those blocks.

### 30s for 30 Quilt Block Challenge

- **Deadline for submitting blocks is Oct. 1, 2010.**
- Send your blocks and payment (checks made payable to AWSG) to:  
**AQSG '30F's for 30** c/o Paula Pahl, 9204 Sugarstone Circle, Highlands Ranch, CO 80130.

Be sure to include your name, address and phone number.

To learn more about the 30's for 30 Challenge, go to [www.americanquiltstudygroup.org/30for30.asp](http://www.americanquiltstudygroup.org/30for30.asp).



## REGIONAL SHOWS & EVENTS

**Case IH Sponsors 'Red Tractor' Quilt Contest - June 24-26, 2010** Case IH Agricultural Equipment invites quilters to share their International Harvester spirit by entering the first "Red Tractor" quilting contest. Case IH, the sponsors, offer a cash award of \$1,000 for first prize. Quilts will be judged during the 21st annual Red Power Roundup of IH Collectors Club. Complete set of rules is at: [http://www1.caseih.com/northamerica/Promotions/Documents/Red\\_Tractor\\_Quilt\\_Contest\\_2009.pdf](http://www1.caseih.com/northamerica/Promotions/Documents/Red_Tractor_Quilt_Contest_2009.pdf)

### Shows:

**June 17-19, 2010**, 41st Annual NQA Quilt Show, Columbus, OH. [www.nqaquilt.org/2010show](http://www.nqaquilt.org/2010show). 614-488-8520.

**June 23-26, 2010**. Shipshewana Quilt Festival, Shipshewana, Indiana, featuring Eleanor Burns. 866-243-9434.

**July 23-24, 2010**. Hayward 2010 Quilt Show, Flat Creek Inn, Harward, WI. [haywardpiecemakers@hotmail.com](mailto:haywardpiecemakers@hotmail.com)

**August 3-7, 2010**, *Milwaukee Machine Quilting Show*, at Wyndham Milwaukee Airport Hotel & Convention Center, 4747 S. Howell Ave., Milwaukee (across from Mitchell Airport). [www.mmqshow.com](http://www.mmqshow.com)

**Aug. 7, 2010**, 10am-3pm, Quilts in the Park, presented by Shop Sisters Area Quilt Shops, Jones Park on Hwy 26 South, Fort Atkinson, WI. Includes these quilt shops: Backyard Quilts, The Quilt Patch, Woodland Quilts, Loose Threads & Kari's Sew Unique. Call Backyard Quilts for questions, 920-568-1974.

**September 9-11, 2010**, Nancy Zieman's Quilt Expo, Madison, WI, juried and judged quilt competition. **For Quilt Expo Education Opportunities contact:** Deanna Springer, Marketing Director, Nancy Zieman Productions, 215 Corporate Dr., Suite D Beaver Dam, WI 53916. 920-356-9506 or [wiquiltexpo@ziemanproductions.com](mailto:wiquiltexpo@ziemanproductions.com)

**Sept. 11-12, 2010**. A Quilter's Harvest 2010, 15325 West Michigan Ave., Marshall, MI. 269-963-8454.

**Oct. 2-3, 2010**. Mount Horeb Fall Heritage Festival Quilt Show, 105 N. Grove St., Mount Horeb, WI 608-437-5448.

## Road Trip - Quilt Shops to Visit!

### Wisconsin

Biggsby's Sewing Center  
2435 N 124<sup>th</sup> St.  
Brookfield, WI 53005  
262-785-1177

Material Matters  
W62 N580 Washington  
Cedarburg, WI 53012  
262-377-0345

Ye Olde Schoolhouse  
318 Green Bay Rd.  
Cedarburg, WI 53012  
262-377-2770

Stitchery  
N2482 County Road O  
Delavan, WI 53115  
262-728-6318

Sawdust & Stitches  
13 S. Wisconsin St.  
Elkhorn, WI 53121  
262-723-1213

Patched Works  
13330 Watertown Plank Rd.  
Elm Grove, WI 53122  
262-786-1523

Backyard Quilts  
N1541 Knaack Court  
Fort Atkinson, WI 53538  
920-568-1974

The Quilt Patch  
W3352 Lower Hebron Rd.  
Fort Atkinson, WI 53538  
262-593-8462

Pamella's Place  
S42 W31230 State Rd (Hwy 83)  
Genesee Depot, WI 53127  
262-968-3821

Life's a Stitch  
5130 E. Highway 14  
Janesville, WI 53546  
608-756-9850

The Quilted Basket  
N88 W16599 Main St.  
Menomonee Falls, WI 53051  
262-251-8791

Loose Threads  
8005 N US Hwy 26  
Milton, WI 53563  
608-868-7912

Ben Franklin Crafts  
Whitman Park Shopping Center  
1083 Summit Ave.  
Oconomowoc, WI  
262-657-0271

Sewing Basket LLC  
426 E. Mill St.  
Plymouth, WI 53073  
920-892-4751

Sew 'n Save and  
The Fabric Gallery  
3701 Durand Ave.  
Racine, WI 53405  
262-554-8708

Reedsburg Quintessential Quilts  
940 E. Main St.  
Reedsburg, WI 53959  
608-524-8435

Bits 'n Pieces Quilt Shop  
N4 W22496 Bluemound Rd.  
Waukesha, WI 53186  
262-547-6022

Millhouse Quilts  
100 Baker St.  
Waukegan, WI 53597  
608-849-6473

Woodland Quilts LLC  
147 W. Main St.  
Whitewater, WI 53190  
262-473-2978

### Illinois

A Touch of Amish  
130 Applebee St.  
Barrington, IL 60010  
847-381-0900 or 888-578-4587

All My Stitches  
407 S. State St.  
Belvidere, IL 61008  
815-547-1099

New Material Girl  
21 N. Williams St.  
Crystal Lake, IL 60014  
815-459-2084

Pieceful Gathering Quilt Shop  
106 Northwest Highway  
Fox River Grove, IL 60021  
847-516-7911 or 866-455-7911

Quilt Play  
62 Center St.  
Grayslake, IL 60030  
847-548-496



Sunshine & Shadow Quilt Shoppe  
1241 N. Green St.  
McHenry, IL 60050  
815-385-5003

Quilter's Heaven  
1239 Shermer Rd.  
Northbrook, IL 60062  
847-272-7245

Sewing Concepts  
110 S. Johnson St.  
Woodstock, IL 60098  
815-338-7754

Woodstock Quilts  
216 S. Seminary  
Woodstock, IL 60098  
815-338-1212

### Indiana

Lolly's Fabrics  
255 Main St.  
Shipshewana, IN 46565  
260-768-4000

Yoder's Department Store  
300 S. Van Buren St.  
Shipshewana, IN 46565  
260-768-4887

Lighthouse Quilt General Meeting Minutes  
May 24, 2010

Kay called meeting to order.

No new members, quite a few guests.

Jayne Steffens introduced the members who are doing the mini classes. Barb Vallone is doing "Binding you can do," Stevie Breit is going to do "Curved Paper Piecing," Debbie Blaustein is showing off "Cotton Theory Rugs" and Roxanne Mierow showed us guild members in the news and the programs they do.

Barb Vallone had a handout and a demonstration on the technique she uses in binding. Walked everyone through the process from start to finish, stunning results.

Stevie Breit had a handout for resources for curved paper piecing. She then demonstrated basic paper piecing and moved onto the curved technique. A baggy bottom for a smooth curve. Stevie also had some books with various patterns and gorgeous pictures of the quilts in these books.

Debbie Blaustein had a really good demonstration on Cotton Theory Rugs, she took us step by step. She also had a handout with a "pattern" that gives you good guidance to go along with the demonstration. Kind of like Show and Tell with fabric.

Roxanne Mierow showed us the guild members in the "news". *The Quilt Show* did a feature on our pillowcase project with Lois Pedersen. How it got started and the things we do to keep it active and running. A very nice presentation of the program and all Lois and friends do for it. Also shown was the N.O.W. program or Nuns on Wheels. Mary Schaeffer guides the program that makes and supplies quilts for retired nuns at the Siena Center. Lighthouse guild members volunteer their services for this worthwhile project.

Jayne announced the next month's speaker, Rosie Werner with Kit Quilts. Jayne also announced that the Cedarburg Quilt history Museum has raised 1.1 million for a new facility. They are short \$175,000, but a generous donor has promised to match all future donations to help them reach the goal needed.

Kay had a thank you note from the National Quilt Museum in Paducah for the Pat Berry book we donated for the auction. Kay then had Lois Pedersen step up and presented her with the Pillowcase Crown and a specially made pillowcase for her dedication to the Pillowcase project.

Lois let us know that 146 guild members have made pillowcases. Lois had certificates for the folks who have made 100 or more pillowcases. Pat brown is the top dog in pillowcase assembly. She has done over 1000 pillowcases. Kudos to Pat! Pat Brown and Mary Bielefeldt have volunteered to carry on the project. A show of hands from guild members agreed to carry on with the project.

Ruth Rohlfing announced that Car 25 on Time Warner Cable will have the next "Quilt Conversations" with Mary Piper available for viewing.

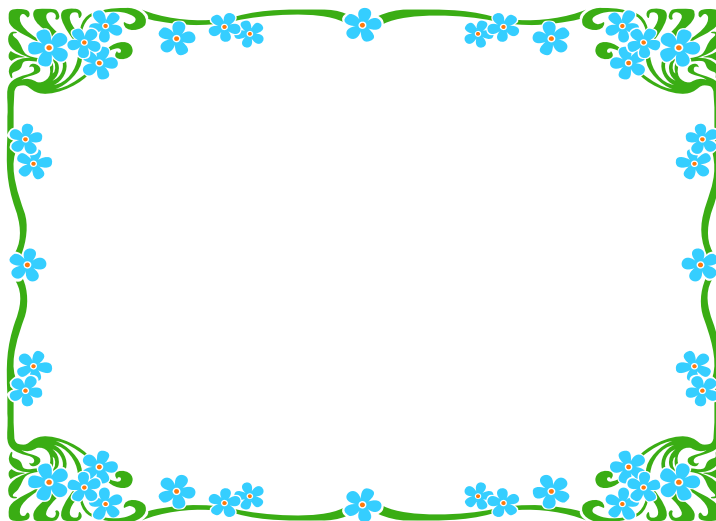
Kitty Friend let folks know that the MQS-Machine Quilting Society is August 3-7<sup>th</sup>. Please look at her display board for more information.

Pat Brown still has challenge bags left for next year's quilt show.

Door Prizes were drawn, and show and tell was enjoyed by all.

Respectfully submitted,  
Debbie Boice, Recording Secretary

Lighthouse Quilters Guild  
P. O. Box 372  
Racine WI 53401  
[www.lighthousequiltersguild.org](http://www.lighthousequiltersguild.org)



*Newsletter Editors / Website Coordinators*  
Monica Bissen, [mmbissen@wi.rr.com](mailto:mmbissen@wi.rr.com)  
Debbie Blaustein, [dblaustein@wi.rr.com](mailto:dblaustein@wi.rr.com)

## June Hospitality

**Chairperson:** Cindy Garcia

**Theme:** Father's Day—Your dad's favorite food

Stevie Breit	Sally Anderson
Diane Zimmerman	Vernette Cairns
Cindy Byers	Joan Ball
Autumn Latimore	Carolyn Christensen
Bonnie Cruz	

## July Hospitality

**Chairperson:** Kitty Friend

**Theme:** Pot Luck Picnic

Pat Brown	Judy Olmstead
Debbie Boice	Irma Anderson
Shirley Kramer	Irene Lewis
Mary Piper	
Lois Pedersen	