



Lighthouse Quilters Guild

May 2010

Kay's Turkey Tracks

Happy May!



I enjoyed learning about "Who Invented the Sewing Machine", with Sylvia Adair. I thought of the treadle sewing machine that is at my mom's folks' house. It came from my grandma. Both my sisters learned to sew on that machine. I learned on a Singer machine in 4-H. My how the machines have changed throughout history - very basic stitches to computerized.

I picked up a package of the fabric for the 2011 Quilt Show Challenge - Pearl Passion. The pearl is the symbol for the 30th Anniversary. Now what shall I make . . .

And I'd like to take a moment to thank everyone who signs up for hospitality to bring treats each month. The variety is excellent, from veggies to sweets and everything in between. Thank you!

See you at the May meeting,
Kay

Inside This Issue

| | |
|---|---|
| 2010 Programs & May 24th program | 2 |
| Lighthouse Charity Quilt Projects Miscellaneous Notes | 3 |
| "Quilt Conversations" - Our Quilt Show on TV Sew 'n Save & The Fabric Gallery News | 4 |
| Thank You Milwaukee Art Museum Exhibition & Coupon AQSQ 30's for 30 Challenge | 5 |
| Regional Shows & Events Lighthouse General Meeting Minutes - April 26 | 6 |
| Pillowcases for the Troops | 7 |
| Hospitality | 8 |

May Birthdays to Celebrate!

- Sue Scheckel 5/6
- Donna Wheeler 5/7
- Era Jo Wear 5/8
- Rachel Riley 5/20
- Janet Kuhl 5/23
- Jo Lettsome 5/23
- Mary Kay Shimkus 5/23
- Geraldine Botting 5/26
- Genevieve Hostak 5/26
- Diane Badtke 5/27
- Mary Bielefeldt 5/29
- Sharon Schaeffer 5/29
- Dorothy Broihier 5/?



Next Meeting

Things to bring Monday, May 24, 7:00 PM at Lutheran Church of the Resurrection

- Name Tags
- Show & Tell

Newsletter Articles Due

The deadline for submitting articles is the first Friday of each month. Submit your articles to:

Monica Bissen at mmbissen@wi.rr.com

Debbie Blaustein at dblaustein@wi.rr.com

2010 LHQ Board
NQA Chapter WI 727

President
Kay Rigert

Vice President of Programs
Jayne Steffens

Vice President of Planning
Roxanne Mierow

Secretary
Debbie Boice

Treasurer
Janet Kuhl

Hospitality
Deborah Gillmore

Membership
Stevie Breit

Librarian
Mary Bielefeldt

Historian
Louise Selkove

Publicity
Kitty Friend

**Newsletter/
Website Coordinators**

Monica Bissen
ymbissen@wi.rr.com

Debbie Blaustein at
dblaustein@wi.rr.com

Webmaster
Jennifer Janzer

2010 Programs

| | |
|-----------------|--|
| May 24 | Guild Mini Classes. Get a close-up view of new ideas from our own guild experts. |
| June 28 | Kit Quilts - Rosie Werner. Enjoy the stories of 20th Century kit quilts and, even better, see them up close and personal. |
| July 26 | Picnic. A favorite annual event. |
| August 30 | Dancing on Your Quilt - Ann Fahl. Racine's own Ann Fahl will share many do-able techniques from her brand new book "Dancing with Thread." |
| September 26-27 | Workshops & Presentation - Susan Cleveland. (Co-sponsored by The Fabric Gallery at Sew 'N Save.) <u>Workshops:</u> 9/26, 10:00-1:00: Marvelous Miters 9/26, 2:00-5:00: Plain & Perfect Binding 9/27, 9:00-4:00: Piping Hot Binding 9/27, 7:00 Guild Program: My Eclectic Quilt Pageant For workshops, register with Jayne Steffens, foxdance@wi.rr.com , or 262-638-9221. |
| October 25 | What a Judge Looks For - Maribeth Schmidt. A certified judge discusses standards, common mistakes, and how to increase your chance for success in the world of quilt competition. |
| November 29 | Christmas Party. Guaranteed to be an enjoyable finale for a year of learning and sharing. |

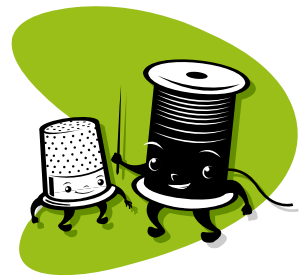
RESIDENT EXPERTS TO TEASE, TANTALIZE & TEACH

On Monday, May 24th, attendees at the Lighthouse Quilters Guild meeting will be treated to a series of mini-classes by fellow guild members. These resident experts will each present their topic four times; guild members will rotate and be able to hear all of the presentations at some time during the meeting.

The four presenters and their topics are:

- Debbie Blaustein - "Cotton Theory Rugs"
- Barb Vallone - "Bindings YOU Can Do"
- Roxanne Mierow - "The Quilt Show - Lighthouse in the News"
- Stevie Breit - "Curved Paper Piecing"

So join us at 7:00pm to learn some new quilting techniques and enjoy the company of your sister quilters. The meeting will take place at Lutheran Church of the Resurrection, 322 Ohio, Racine, WI.



LIGHTHOUSE CHARITY QUILT PROJECTS FOR 2010



Two members will distribute quilts this year:

Carolyn Christensen for HALO and Women's Resource Center

Barbara Vallone for Quilts for the Community which includes:

- All Saints NICU, Racine, and Children's Hospital, Milwaukee
- Ridgewood Nursing Home plus other Racine assisted living and nursing homes **including Becker Shoop's request for small wall hangings.**
- Operation Snuggles - quilts for soldiers' children and soldiers.

Please visit our Charity Quilt display which has:

- A slip of **paper** for you to indicate WHERE your quilt should go and circle if it is WASHED or not.
- A baby quilt **pin** for you to add to your name tag.
- A **place** to leave your quilt (two wash baskets!) before OR after Show & Tell.

Quilt size can range from 36" x 36" to twin bed; square or rectangular. Operation Snuggles also takes crocheted or knitted afghans in lap quilt sizes. Women's Resource Center and HALO welcome pieced, cheaters, fleece, crocheted and knitted items.

We now have seven wall hangings for Becker Shoop Nursing Home at 6101 - 16th Street, and they need about 24. This is a good place for those wall hangings that are still nice but don't have a place in your home anymore. Jayne Steffens will help coordinate this new "Quilts for the Community" project.

We welcome your suggestions and encourage you to participate in this project. **Free fabric kits are available for anyone to "play" with and "create"!!!! Let me know if you want one!**

THANK YOU for continuing to make this project such a success.

Barbara Vallone

QUILT TOPS & MORE SALE!

Saturday, May 22, 9am-4pm,
1543 Illinois Street. Barb
Conrad is selling her fabrics,
notions, and quilt tops - both
antique and vintage! Lots of
good stuff. You can contact her at 633-1176.



GOODLAND ELEMENTARY SCHOOL QUILTERS

RECEPTION. Guild members are
invited to the 4th Grade Quilters
Reception on May 20th from 6:30
to 7:00 pm at Goodland
Elementary School, 4800 Graceland Blvd.



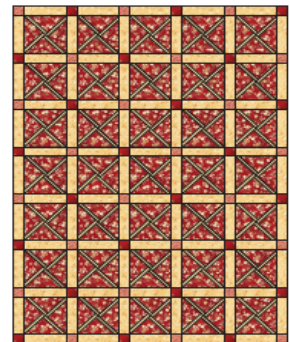
An FYI from TC Wiley:

Thought I would tell you that the pattern mentioned in April's Show 'n Tell by Judy Olmstead and that drew such interest is called *Veranda Trellis* and is now a free pattern at the following site: www.eeschenck.com

Choose Quilts and Patterns on the left side; then choose Free Patterns and peruse the page to the 8th row down. Voila! There it is....

Have fun.

TC



Quilt Show Programs on TV


Quilt Conversations is a 4-part program that was filmed at the time of the 2009 Lighthouse Legacies Quilt show last fall. The first show has been playing on Time Warner Channel 25 (CAR 25) since May 2. The second show might be aired toward the end of May. We will attempt to email information to the membership when a program is scheduled to air. Please call your Lighthouse friends who do not have email and consider inviting your "antenna friends" over to watch each show. Also, CAR 25 is expected to be available to AT & T customers "soon."

- Show #1 Honored Quilter Rhonda Rodero with Jennifer Janzer
3 Demonstrations: Joyce Herringer, Mary Ludvigsen, Barbara Vallone
- Show #2 Honored Quilter Mary Piper with Christy Schliesmann
3 Demonstrations: Christy Schliesmann, Kathy Lijewski, Mary Ann Fehl
- Show #3 Judging Quilts: Lynn Erbach with Jennifer Janzer
Appraising Quilts: Jayne Steffen with Jennifer Janzer
- Show #4 2009 Lighthouse Legacies Quilt Show
A general overview of the show rather than each and every quilt; especially good for the general public that has never been to a quilt show.


Over the course of the four shows we hope that every item in the show is shown at some point. I fear, however, that some items were not captured.

Your comments and suggestions are welcomed.

Contact Ruth Rohlfig, 262-639-2915, ra.rohlfing@gmail.com



Don't miss these events
at Sew 'n Save and The Fabric Gallery



Join us for the
Exclusive Preview of local fiber artist, Ann Fahl's new book,
DANCING WITH THREAD

on Friday evening, May 14th at 6pm til 7:30pm

Meet Ann, get your book autographed and see some of Ann's very special quilts.

There is no cost for this event and light refreshments will be served.

YOU MUST PRE-REGISTER PRIOR TO THE EVENT TO ENSURE THAT YOU WILL GET A COPY OF THE BOOK.

Join our **Holidays at Home Block of the Month**
and get ready to make yourself (or someone you love) a very special holiday quilt.
The sample is hanging in the store...and this program begins in August.

Need a weekend away? Check out our website for details on our next **Girls Weekend Out**.

It is scheduled for August 13th-15th to the Amish Country of Northern Indiana.

Don't miss out.....the bus is filling fast.

For your planning pleasure, we will again be hosting a coach bus to take you to **Quilt Expo** in Madison, WI.

We have begun the "interested lists" for both Friday and Saturday, September 10th and 11th.

\$40 gets you there and back, too and includes entry into the show!

The best way to get there.....on the Sew 'n Save bus.

Check our website for more info on these events and more.



Our thanks go out to Sharon Guetzlaff who so generously donated money from the Waverly Iowa Quilters Guild in memory of her mother, Deleva Oppermann, who died recently. Two new books, "Reverse Applique" and "Bountiful Beauties", will be added to our library to honor the memory of Sharon's mother, who was also a quilter. Thank you, Sharon.

Mary Bielefeldt

American Quilts: Selections from the Winterthur Collection

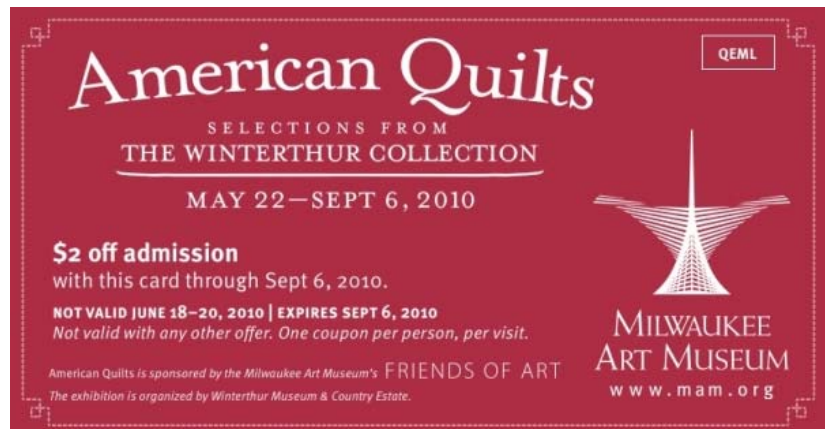
May 22–Sept 6, 2010

Uncover rich stories, hand-stitched into exquisite works of art

The Milwaukee Art Museum would like to invite you come see our upcoming exhibition, *American Quilts: Selections for the Winterthur Collection*. The exhibition will showcase 40 uniquely crafted quilts that document women's political, social, and cultural lives in the formative period of the early American republic. Learn about this special time in American quilting history and connect with others who share your passion for quilting.

As an incentive to visit this great exhibition, we would like to extend to you an offer to visit at a discount. Present this coupon when you visit the Milwaukee Art Museum between May 22 - September 6, 2010, you will receive \$2 off of your admission. We encourage you to share this discount with your Quilting or crafting community, and look forward to seeing you at the Milwaukee Art Museum. (Please note that the coupon is not valid June 18-20, 2010.)

Milwaukee Art Museum
700 N. Art Museum Drive
Milwaukee, WI 53202
P: 414.224.3294



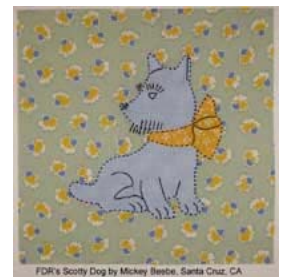
30's for 30 Quilt Block Challenge

The American Quilt Study Group (AQSG), a non-profit organization dedicated to preserving the history of quilts and quiltmaking, is turning 30 and has announced a nationwide block challenge called "30's for 30". For every 30 blocks received, one person's name will be drawn to win those blocks.

30s for 30 Quilt Block Challenge

- **Deadline for submitting blocks is Oct. 1, 2010.**
- Send your blocks and payment (checks made payable to AWSG) to:
AQSG '30F's for 30 c/o Paula Pahl, 9204 Sugarstone Circle, Highlands Ranch, CO 80130.
Be sure to include your name, address and phone number.

To learn more about the 30's for 30 Challenge, go to www.americanquiltstudygroup.org/30for30.asp.
Questions? Contact Paula at the address above or email: paulapahl@q.com; phone: (303) 204-2821.



REGIONAL SHOWS & EVENTS

May 21 & 22, 2010, Friday and Saturday—Quilts & Fiber Arts University, demonstrations and workshops. Featured speaker: Roberta Williams' Quilts, presented by her daughter, Robin Luther. \$25 includes up to four workshops, speaker and potluck lunch. Wisconsin Museum of Quilts & Fiber Arts, N50 W5050 Portland Rd., Cedarburg, WI 53012, 262-546-0300. Brochure will be posted at the bulletin board at the Lighthouse general meetings.

Case IH Sponsors 'Red Tractor' Quilt Contest—June 24-26, 2010 Case IH Agricultural Equipment invites quilters to share their International Harvester spirit by entering the first "Red Tractor" quilting contest. Case IH, the sponsors, offer a cash award of \$1,000 for first prize. Quilts will be judged during the 21st annual Red Power Roundup of IH Collectors Club. Complete set of rules is at: http://www1.caseih.com/northamerica/Promotions/Documents/Red_Tractor_Quilt_Contest_2009.pdf

Shows:

August 3-7, *Milwaukee Machine Quilting Show*, at Wyndham Milwaukee Airport Hotel & Convention Center (across from Mitchell Airport), Milwaukee. See www.mmqshow.com for details.

September 9-11, 2010, Nancy Zieman's Quilt Expo, Madison, WI, juried and judged quilt competition. **For Quilt Expo Education Opportunities contact:** Deanna Springer, Marketing Director, Nancy Zieman Productions 215 Corporate Dr., Suite D Beaver Dam, WI 53916. 920-356-9506 or wiquiltexpo@ziemanproductions.com

Oct. 2-3, 2010 Mount Horeb Fall Heritage Festival Quilt Show, admission \$2.

Lighthouse Quilt General Meeting Minutes

April 26, 2010

Kay called meeting to order. Guests introduced themselves.

Roxanne introduced the guest speaker, Sylvia Adair, who gave a presentation and slide show on Sewing Machines and their History. She entertained us with stories about the various inventors and their sewing machine inventions from 1790 through the 1950's. She brought several of the vintage sewing machines from her collection, which all the Guild members were invited to examine and try out.

Ruth Rolfson introduced the series that will soon be running on Time Warner Channel 25 (Car 25). Quilt Conversations is the name of the show and they will run four shows about the Lighthouse Legacies Quilt show last fall.

Lois Pedersen let us know we are only 107 pillowcases away from 5000! Thanks to all folks who have made and donated time, fabric and money for this great cause. She has two people willing to step up in her place if we as a guild desire to carry on with the project past the 5000.

Jennifer Janzer announced that we have a group willing to make the quilt for the 2011 quilt show. They are the O.C.D. Quilters. Meg Fleischmann is a member of the group. She also had the "Pearl Passion" challenge fabric. This is the challenge fabric for the 2011 quilt show. The wall hanging is to be 60 inches in circumference minimum with 120 inches circumference being the maximum.

Mary Bielefeldt introduced Jinny Beyer's new book, "Quilter's Album of Patchwork Patterns," which has been purchased in memory of Barbara Englander. She has also purchased Anne Fahl's new book, "Dancing with Thread".

Roxanne Mierow announced the classes for Susan Cleveland that are tying in with her guild lecture. Piping Hot Binding sounds fun!

Door prizes were drawn and Show & Tell was enjoyed by all.

Respectfully submitted,
Debbie Boice, Recording Secretary

PILLOWCASES FOR THE TROOPS



How did we ever get all this started? Do you remember?

Five years ago, in May 2005, this was going to be my personal contribution to our service people and I made 12 pillowcases and figured that was it. Then I mentioned the project to 2 other small quilt groups (Wednesday Wanna Bees and Pieceful Dreamers) and they picked up on it, showing excitement about making some pillowcases as well. After making another couple dozen, the WWB's suggested I ask the Lighthouse Guild if they might be interested in participating in this project. The rest is history...

How many people have been involved?

This is very hard to determine exactly, but I will do my best. I have record of 146 of our Lighthouse Guild members who have made at least one pillowcase over the past five years. Nine quilters have made over 100: Jody Knudsen, Shirley Kramer, Judy Kroes, Welcome Sittig, Barb Terkle, Barb Van Rudan, Jan Wenzel, Donna Wheeler, and me. To top us all, Pat Brown has made 1002 (1/5 of them) all by herself. WOW!!! Then besides that, several other groups have contributed to our numbers as well: Southport Quilters from Kenosha; Quieside Quilters from Bass Harbor, Maine; First Friday Quilters; two girl scout troops; the sewing classes from Walden and Horlick; and other family and friends who heard about this and wanted to be involved.

What about the Fabric, how much has it taken and where did it come from?

When you figure that each pillowcase takes approximately 39" of fabric, that amounts to using 195,000" or 5,417 yards of fabric...that is 361 bolts of fabric. (Enough to compete with The Fabric Gallery)

So where did all this fabric come from? At best, I can say it came from you and your generosity. But I would also like to recognize a few other people and places that have kept us in fabric: our own Fabric Gallery has been extremely generous over the years, so has the Quilted Basket in Menominee Falls, you also have generously shared some of your stash and gathered fabric from friends and other quilters who have passed on or decided to eliminate their stash.

Then we collected money to purchase fabric from these sources: HOG Rally (yes the Harley people); Curves (Northside); our July Rummage Sale, Pillowcase Doll sales, passing the donation bucket, First Friday Quilters, and Rainbow Quilters.

How did they get shipped?

A huge thanks to Karen Grochowski and her commitment to the Books for Soldiers program. She puts pillowcases in all the thousands of packages she sends off to the troops and we are the largest group contributing

Are they appreciated?

Oh, yes, there is not a doubt when they take time to write a thank you note, in spite of their hectic schedules. Here is just one more: *Hello Badger Buddies, Sorry it took so long for me to send a picture and thank you for the gifts. It is good to know that people are still thinking of us over here. We will be back in the states around early Sep. And we all cannot wait. I have a different picture of the pillowcase when I took it on a flight with me. I will send it soon. And once again Thank you very much. SSG Michael N.* (picture on tri-fold board)

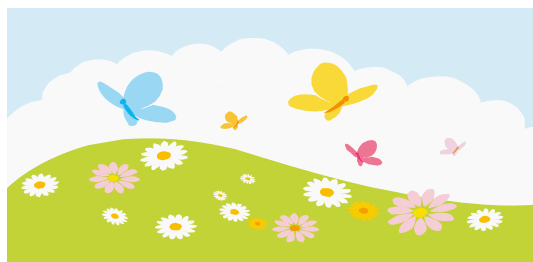
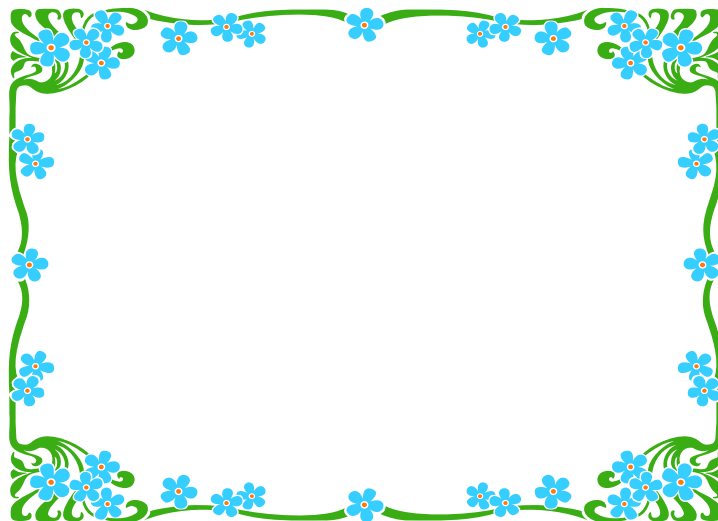
What is next?

Two people have volunteered to continue this project if you want to support it by sewing, and contributing money to purchase fabric, to keep the kits coming. Now it is up to you. We will discuss it at our next meeting.

I have truly enjoyed my journey with all of you as you have been so supportive. My heart is warmed, knowing we have touched thousands of troops who are protecting our freedom, with something personal, homemade, colorful, and soft. Thanks for taking this journey with me.

Lois Pedersen

Lighthouse Quilters Guild
P. O. Box 372
Racine WI 53401
www.lighthousequiltersguild.org



Newsletter Editors / Website Coordinators
Monica Bissen, mmbissen@wi.rr.com
Debbie Blaustein, dblaustein@wi.rr.com

May Hospitality

Chairperson: Darlene Heiden

Theme: Graduation Time - Foods served to celebrate any achievement

| | |
|------------------|------------------|
| Deb Tyryfter | Maria Rivest |
| Mary Kay Shimkus | Sandy Kruppstadt |
| Rhonda Rodero | Paulne Verbrugge |
| Rita Adamczyk | Sandy Veit |

June Hospitality

Chairperson:

Theme: Father's Day - Your dad's favorite food

| | |
|-----------------|-----------------|
| Stevie Breit | Autumn Latimore |
| Diane Zimmerman | Bonnie Cruz |
| Cindy Byers | Joan Ball |
| Cindy Garcia | Sally Anderson |