



Lighthouse Quilters Guild

February 2010

Kay's Turkey Tracks

Whew, I made it through my first meeting, lost my agenda once (thanks Marie!), now only 21 more meetings to go, but who's counting!



Wow, we have such talent we have in our guild! The January program, "Then and Now", is one of my favorite programs. I enjoy seeing where a member started their quilting journey and hearing how they evolved to where they are today. The first/last quilt and stories shared were very interesting. Thank you, Judy Barnes, Regina Scott Brooks, Cindy Garcia, Joyce Herring, Cecilia Johnson, Pat Limburg, Marie Raymond, Sue Scheckel, Jacky Tomkins and Marylou Wendzinski for sharing your quilts and your stories!

Autumn Latimore, the winner of the 2009 Christmas Raffle Quilt, has graciously offered to make the quilt for the 2010 Holiday Party. Thank you, Autumn!

In 2011, the Lighthouse Quilt Guild will be together as a group for 30 years. Congratulations! The guild will also be hosting our Quilt Show in 2011. I know it's early to even start thinking about our show, but it will be here in a blink of an eye! Jennifer Janzer has volunteered to be the Quilt Show Chairman. Thanks, Jennifer!

With that said, I've got to put my writing pencil down (actually my computer), get out my colored pencils, graph paper, a few quilt books and magazines, fabric, needles and thread, and don't forget the inspiration from Show & Tell to start working on a new project. Or maybe I should finish one of the 10 or 15 projects (or more, I lost count) that I already have started. . .

Enjoy working on your projects. See you at the February meeting!

Kay M. Rigert

Inside This Issue

| | |
|--|---|
| 2010 Programs | |
| Feb. 22 Program: Taking Care of YOUR Quilts - Sandy Schweitzer | 2 |
| Membership | 3 |
| Hospitality News | 3 |
| January Guild General Meeting Minutes | 4 |
| Studio Quilt-In Dates | 5 |
| 2010 Quilt Camps | 5 |
| Regional Shows & Events | 6 |
| Charity Quilt Projects | 7 |
| Hospitality News | 8 |

Next Meeting

Things to bring Monday, February 22, 7:00 PM at Lutheran Church of the Resurrection

- Name Tags
- Show & Tell

Newsletter Articles Due

The deadline for submitting articles is the first Friday of each month. Submit your articles to:

Monica Bissen at mmbissen@wi.rr.com

Debbie Blaustein at dblaustein@wi.rr.com

**** SPECIAL NOTICE****

There will be a "brainstorming" session regarding our website prior to the general meeting on Monday, February 22 at 6:15 PM.

***Your ideas and input are needed.** The Website Committee would like to thank you in advance for your attendance.*

2010 LHQ Board
NQA Chapter WI 727

President
Kay Rigert

Vice President of Programs
Jayne Steffens

Vice President of Planning
Roxanne Mierow

Secretary
Debbie Boice

Treasurer
Janet Kuhl

Hospitality
Deborah Gillmore

Membership
Stevie Breit

Librarian
Mary Bielefeldt

Historian
Louise Selkove

Publicity
Kitty Friend

**Newsletter/
Website Coordinators**

Monica Bissen
MMBissen@wi.rr.com

Debbie Blaustein
dblaustein@wi.rr.com

Webmaster:
Jennifer Janzer

2010 Programs

| | |
|-------------------|---|
| February 22 | "Taking Care of Your Quilts" - Sandy Schweitzer |
| March 29 | Moda rep Stephanie McHugh—co-sponsored by The Fabric Gallery |
| April 26 | Healthy Quilters are Happy Quilters—Panel presentation |
| May 24 | What a Judge Looks For—Maribeth Schmidt |
| June 28 | Kit Quilts—Rosie Werner |
| July 26 | Lighthouse Picnic |
| August 30 | Dancing on Your Quilt—Ann Fahl |
| September 26 & 27 | Red Hot Piping—Susan Carpenter—Workshops & presentation, co-sponsored by The Fabric Gallery at Sew 'N Save. |
| October 25 | Guild Mini Classes—Our own guild experts |
| November 29 | Christmas Party |

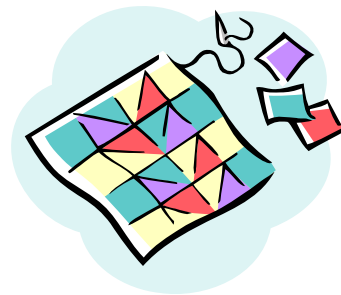
February 22, 2010

Sandy Schweitzer presents: *Taking Care of YOUR Quilts*

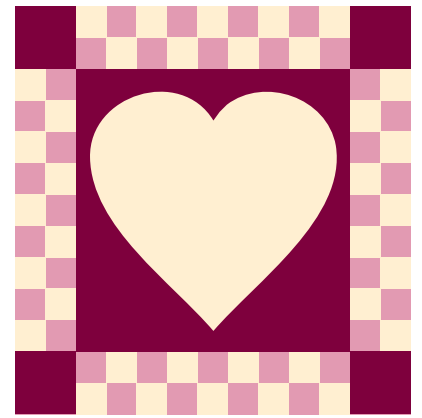
Let's face it - your quilts are precious items. You spent a lot of time and creative energy making your quilts and they should be treasured. Our February speaker, Sandy Schweitzer, will share lots of information about how to take care of quilts. Sandy, a quilt historian, quilt designer and certified quilt appraiser will give us tips about labels and the importance of photographing quilts. She says "Shoot 'em to protect 'em!!" Her presentation will also include a trunk show.

Learn how to protect your quilts at our next meeting on Monday, February 22nd, 7:00pm at Lutheran Church of the Resurrection. Your quilts deserve it!

To learn more about Sandy check her website at www.quiltappraisalsplus.com.



*****PLEASE NOTE*****



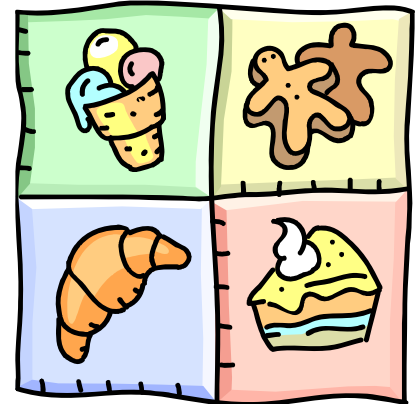
Please stop by the membership desk on your way into the meeting. Sign in for door prizes, sign up for membership if you haven't already, pick up a copy of the budget to be voted on, and check (and correct if necessary) your name and address on the preliminary membership list. See you then!

Stevie Breit

HOSPITALITY NEWS

My thanks to all who have volunteered for the monthly hospitality committee, some more than once. I still have openings for future months and look forward to every member's participation. At our next general meeting, please look for and sign up for the month of your choice. Thank you and see you at the next meeting.

Debby Gillmore



Lighthouse Quilters General Meeting Minutes

January 25, 2010

Kay called meeting to order at 7:00pm. Stevie B. then had the new members and guests introduce themselves.

Barbara Englander passed away. A card was sent to her family and either a book or video will be purchased in memory of her for the library.

Janet Kuhl presented the budget.

Stevie Breit presented the idea of having guild members quilt "tops" for various charity quilts for those who piece tops but do not want to or don't have time to quilt them. Stevie volunteered to quilt some pieced tops and is asking for additional volunteers.

Sent off 18 boxes at Christmas to the troops, two of which were female soldiers. One was a husband and wife team with one being stationed in Iraq and the other in Afghanistan. Thank you note from the husband. The project had a "CEO", Carry Everything Out officer, Jennifer Janzer's husband. A big thanks to him.

Lois Pedersen announced 4534 pillowcases have been made to date. Great news! She also had a tell about a quilt guild in Ellis County Texas (Midlothian) that had asked for an 8" square with our name on it. She made one with our name and location and sent it off. It will be in a quilt at their next quilt show later this year.

Lois purchased a DVD that featured two of the guild's charity activities, pillow cases for Soldiers and Nuns on Wheels. These guild activities were featured on "The Quilt Show with Ricky Tims and Alex Anderson the Quilt Show". The DVD will be shown at a general meeting in the future and ultimately end up in the guild's library.

Kitty Friend announced various quilting events.

Quilt Show 2011 chair is Jennifer Janzer. The guild will celebrate it's 30th anniversary. Plenty of volunteer opportunities for chair people are still open. A volunteer is being sought for the 2011 raffle quilt. Wanting to get this done early so as to enter it in various shows to get "advertising".

Door Prizes were drawn. A thank you note from Rhonda Rodero and Mary Piper , the honored quilters at the 2009 show, was read. Roxanne M. drew for the survey winner.

Another thank you note was read from Wheaton Franciscan thanking the guild for the fund raiser for colon cancer. This fund raiser was in memory of Clarice Sklba.

Show & Tell was enjoyed by all, followed by refreshments.

Respectfully submitted,
Debbie Boice, Recording Secretary

STUDIO QUILT-IN AT RESURRECTION RETURNS FOR 2010



Come and spend "quality time" on a favorite project, a looming deadline, or a creative concept. We will again offer Studio Quilt-Ins on Fridays from 3 to 9 pm and Saturdays from 9 am to 9 pm! Quilt at Resurrection for a total of almost 18 hours for just \$5 each day! Each quilter brings a simple Finger Snack to share and is responsible for her own suppers/lunch. Yes, you can get take-out. Yes, you can go out for suppers.

The remaining 2010 dates are April 9 & 10, August 13 & 14, and November 5 & 6.

Sign up for any or all by contacting Barbara Vallone, 262-539-8185 or QltingB@aol.com.

QUILT CAMPS FOR 2010



Quilt camps are open to any quilter who wants to escape from real life, enjoy the company of other quilters, and have bed and meals provided at a reasonable price per day or long weekend.

Dates/Costs for 2010 are:

- Lutherdale near Elkhorn on Hwy 12/67: March 17-21 / \$50 per night
- Camp Zion in Door County north of Ellison Bay: May 13-16 / \$58 per night
- Conference Point in Williams Bay on Geneva Lake: June 3-6 / \$180 for 3 nights & 8 meals
OR \$136 for 2 nights & 6 meals

Please contact Barbara Vallone at 262-639-8185 or QltingB@aol.com for more information.

Also, there is one more Spring Camp at Lutherdale on April 21-25. Call Lutherdale directly at 262-742-2352.

REGIONAL SHOWS & EVENTS

The South of the Border theme quilts will exhibit each quilter's vision and interpretation of the theme. Entry deadline is March 19, 2010. Entry forms will be available in the Classes & Events Catalog as well as on our website at www.IMQA.org/MQS2010.htm

Theme: *South of the Border* What do you conjure up when you think South of the Border? Is it the food, music, art, a happy fiesta or a lazy siesta? Let your imagination go to express your "South of the Border" images.

The quilt may be pieced, appliquéd, embroidered or painted. Embellishments and specialty threads are allowed. Your artist's statement will be read for the judges to tell them and all of us what makes your quilt "South of the Border". Quilt must fit the perimeter of no less than 240" and no more than 480" and must be a quilt of 3 layers-top, batting, and backing. **ENTRY DEADLINE: MARCH 19, 2010.**

March 19 & 20 - The Fox Valley Technical College will be hosting the 9th Annual 2010 Sewing and Quilting Expo at the Fox Valley Technical College - Oshkosh Riverside Campus. For more information or a brochure, please contact Marie Thull by email at thull@fvtc.edu or by phone at 920-582-4025.

Exhibit runs: January 31-April 11, 2010 Wisconsin Museum of Quilts & Fiber Arts cordially invites you to the opening of our new exhibit: "*Sacred Threads: Spirit In the Cloth*" to be held January 31, 2010, 1-4 PM. at the Interim Museum. Always call to clarify hours before your visit. N50 W5050 Portland Road, Cedarburg, WI 262-546-0300. Hours: Wed.-Sat. 11AM-3PM, Sun. 1-4 PM.

May 12-15, 2010, Machine Quilters Showcase, Overland Park Convention Center, Overland Park, Kansas
MQS-show@IMQA.org

Case IH Sponsors 'Red Tractor' Quilt Contest—Case IH Agricultural Equipment invites quilters to share their International Harvester spirit by entering the first "Red Tractor" quilting contest. Case IH, the sponsors, offer a cash award of \$1,000 for first prize. Quilts will be judged during the 21st annual Red Power Roundup of IH Collectors Club June 24-26, 2010. Complete set of rules is at: [www1.caseih.com/northamerica/Promotions/Documents/Red Tractor Quilt Contest 2009.pdf](http://www1.caseih.com/northamerica/Promotions/Documents/Red_Tractor_Quilt_Contest_2009.pdf)

Quilting is Art - A contest created to showcase quilting as an art form as part of the 2010 Channel 10 Great TV Auction. For details and contest requirements go to: <http://www.mptv.org/events/detail/?id=30>. On this website, which is "MPTV Events", you will also be able to download an entry form.

Shows:

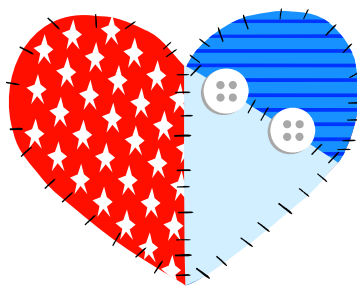
Sunday, March 14 thru Tuesday, March 16, Sun Prairie

Sat/Sun, April 10 & 11, Mukwonago www.mukwonagocrazyquilters.com

Thu/Sat, April 15-17, IQS at Rosemont

Sat/Sun, May 1 & 2, West Bend, www.itsastitchquiltguild.com (<http://www.itsastitchquiltguild.com>)

August 3-7, Milwaukee Machine Quilting Show, at Wyndham Milw. Airport Hotel & Convention Center (across from Mitchell Airport), Milwaukee, WI. Watch www.MMQShow.com for details.



LIGHTHOUSE CHARITY QUILT PROJECTS FOR 2010

Two members will distribute quilts this year:

Carolyn Christensen for HALO and Women's Resource Center

Barbara Vallone for Quilts for the Community which includes:

All Saints NICU, Racine, and Children's Hospital, Milwaukee

Ridgewood Nursing Home and Bethany House, Racine

plus other Racine assisted living and nursing homes

Operation Snuggles - quilts for soldiers and soldiers' children

Please visit our Charity Quilt display which has:

- A slip of paper for you to indicate WHERE your quilt should go and circle if it is WASHED or not.
- A baby quilt pin for you to add to your name tag.
- A place to leave your quilt (two wash baskets!) before or after Show & Tell.

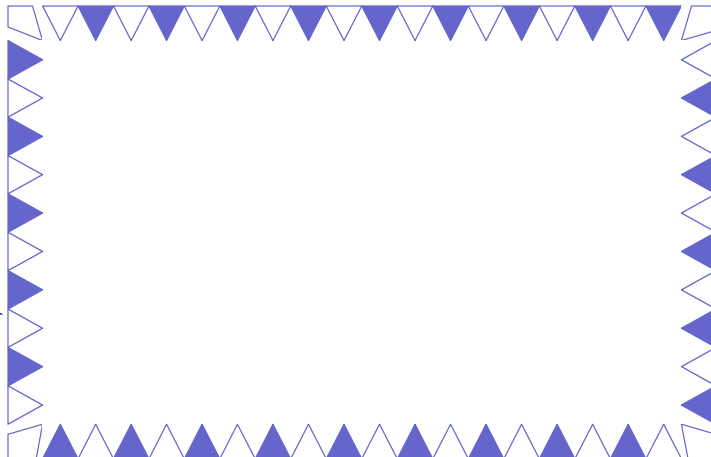
Your quilt size can range from 36" x 36" to twin bed. It can be square or rectangular. Operation Snuggles also takes crocheted or knitted afghans in lap quilt sizes. Women's Resource Center and HALO welcome pieced, cheaters, fleece, crocheted and knitted items.

We welcome your suggestions and encourage you to participate in this project. Can we beat the 2009 Three Guild total of 351 during 2010?? Free fabric kits continue to be available for anyone to "play" with and "create"!!!!

THANK YOU for continuing to make this project such a success.

Barbara Vallone

Lighthouse Quilters Guild
P. O. Box 372
Racine WI 53401
www.lighthousequiltersguild.org



Newsletter Editors / Website Coordinators

Monica Bissen mbissen@wi.rr.com

Debbie Blaustein dblaustein@wi.rr.com

February 22 Hospitality

Chairperson: Jody Knudtson 886 5248

Theme: Go Red - Be Good to Your Heart

Gen Hostak

TC Wiley

Kathy Simon

Kitty Friend

MaryZahn

Barb Vallone

Sandy Larson

Michelle Snyder

March 29 Hospitality

Chairperson:

Theme: Winter's Last Hurrah (White colored foods)

Pat Limburg

Jacky Tompkins

Marge Martin

Shirley Graham

Vicki Madsen

Jean Steidtman

Dorothy Broihier